

Technical Corner

3 June 2022

IHSG

Range: 7.110 – 7.190

---Indeks ditutup di atas EMA5,10 dan membentuk pola small bullish candle, stochastic overbought dan MACD histogram divergence positif. **Target** kenaikan indeks pada level **7.190** kemudian 7.230 dengan *support* di level 7.110 kemudian 7.070.

IHSG (7.149)



PT Adaro Energy Indonesia, Tbk

Rekomendasi: Buy

---Harga ditutup di atas EMA5,10 and membentuk pola long white marubozu yang merupakan sinyal bullish continuation, stochastic netral dan MACD histogram convergence negatif. **Target** kenaikan harga pada level **3.370** kemudian 3.410 dengan *support* di level 3.290 *cut loss* jika break 3.250.

ADRO (3.330)



Technical Corner

3 June 2022

PT Indosat, Tbk

Rekomendasi: Buy

---Harga ditutup di atas EMA5,10 dan membentuk pola long white marubozu yang merupakan sinyal bullish continuation, stochastic memasuki zona netral dan MACD histogram convergence negatif. **Target** kenaikan harga pada level **6.000** kemudian 6.200 dengan *support* di level 5.600 *cut loss* jika break 5.400.

ISAT (5.800)



PT Jasa Marga, Tbk

Rekomendasi: Buy on Weakness

---Harga ditutup membentuk pola small bearish candle namun masih di atas EMA5,10, stochastic netral dan MACD histogram divergence positif. **Target** harga beli pada level **3.940** dengan *resist* di level 4.040 kemudian 4.090.

JSMR (3.970)



Technical Corner

3 June 2022

PT Perusahaan Gas Negara, Tbk

Rekomendasi: Buy on Weakness

---Harga ditutup membentuk pola doji yang merupakan sinyal indecision namun masih di atas EMA5,10, stochastic death cross dan MACD histogram convergence positif. **Target** harga beli pada level **1.770** dengan *resist* di level 1.820 kemudian 1.855.

PGAS (1.785)

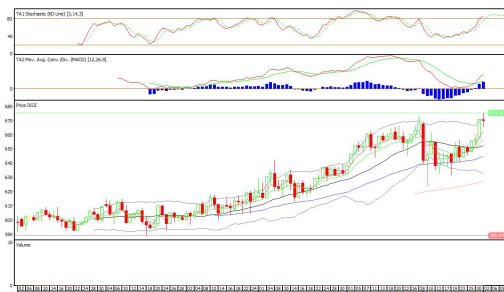


Syariah Premier ETF JII

Rekomendasi: Buy on Weakness

---Harga ditutup membentuk pola doji yang merupakan sinyal indecision namun masih di atas EMA5,10, stochastic memasuki zona overbought dan MACD histogram divergence positif. **Target** harga beli pada level **667** dengan *resist* di level 675 kemudian 680.

XIJI (670)



Technical Corner

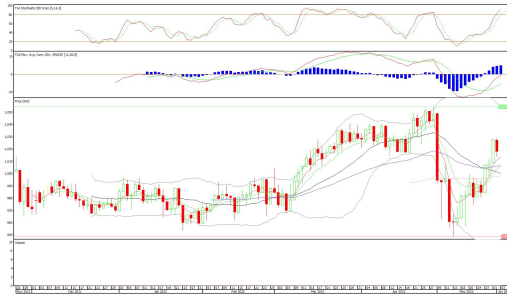
3 June 2022

Premier ETF Indonesia Consumer

Rekomendasi: Buy on Weakness

---Harga ditutup membentuk pola long black marubozu yang merupakan sinyal bearish continuation namun masih di atas EMA5,10, stochastic memasuki zona overbought dan MACD histogram divergence positif. **Target** harga beli pada level **1.014** dengan *resist* di level 1.027 kemudian 1.039.

XIIC (1.018)



Pinnacle Core High Dividend ETF

Rekomendasi: Buy on Weakness

---Harga ditutup membentuk small bearish candle namun masih di atas EMA5,10, stochastic memasuki zona overbought dan MACD histogram divergence positif. **Target** harga beli pada level **576** dengan *resist* di level 585 kemudian 590.

XPDV (580)



Technical Corner

3 June 2022

PT INDO PREMIER SEKURITAS

Pacific Century Place 16th Floor SCBD Lot 10
Jl. Jend. Sudirman Kav. 52-53
Jakarta Selatan 12190 - Indonesia
p +62 21 5088 7200

ANALYSTS CERTIFICATION

The views expressed in this research report accurately reflect the analyst's personal views about any and all of the subject securities or issuers; and no part of the research analyst's compensation was, is, or will be, directly or indirectly, related to the specific recommendations or views expressed in the report.

DISCLAIMERS

This research is based on information obtained from sources believed to be reliable, but we do not make any representation or warranty nor accept any responsibility or liability as to its accuracy, completeness or correctness. Opinions expressed are subject to change without notice. This document is prepared for general circulation. Any recommendations contained in this document does not have regard to the specific investment objectives, financial situation and the particular needs of any specific addressee. This document is not and should not be construed as an offer or a solicitation of an offer to purchase or subscribe or sell any securities. PT. Indo Premier Sekuritas or its affiliates may seek or will seek investment banking or other business relationships with the companies in this report.

Refer to Important disclosures on the last of this report