

Technical Corner

15 September 2021

IHSG

Range: 6.090 – 6.170

---Indeks ditutup di atas EMA5,10 dan membentuk pola long white marubozu yang merupakan sinyal bullish continuation, stochastic netral dan MACD bullish crossover. **Target** kenaikan indeks pada level 6.170 dan 6.210 dengan *support* di level 6.090 kemudian 6.050.

IHSG (6.130)



PT Jasa Marga, Tbk

Rekomendasi: Buy

---Harga ditutup di atas EMA50 dan membentuk pola small bullish candle, stochastic netral dan MACD histogram divergence negatif. **Target** kenaikan harga pada level **3.970** kemudian 4.010 dengan *support* di level 3.890, *cut loss* jika break 3.850.

JSMR (3.930)



Technical Corner

15 September 2021

PT Kalbe Farma, Tbk

Rekomendasi: Buy

---Harga ditutup di atas EMA5,10 dan membentuk pola white marubozu yang merupakan sinyal bullish continuation, stochastic konsisten overbought dan MACD histogram convergence positif.

Target kenaikan harga pada level **1.500** kemudian 1.520 dengan *support* di level 1.460, *cut loss* jika break 1.440.

KLBF (1.480)

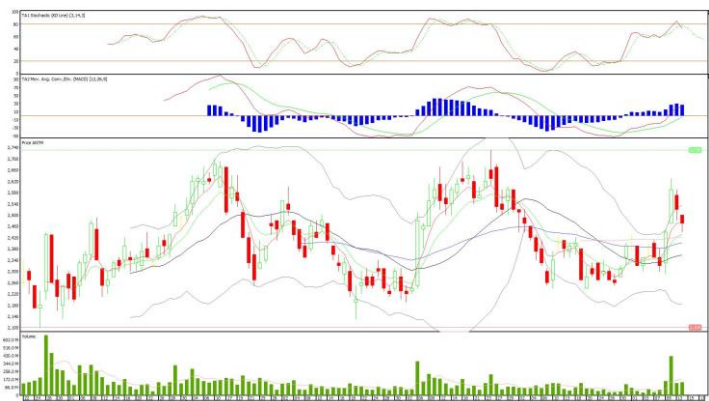


PT Aneka Tambang, Tbk

Rekomendasi: Buy on Weakness

---Harga ditutup membentuk pola black opening marubozu yang merupakan sinyal bearish continuation namun masih di atas EMA10, stochastic death cross dan MACD histogram convergence positif. **Target** harga beli pada level **2.430** dengan *resist* di level 2.520 kemudian 2.570.

ANTM (2.470)



Technical Corner

15 September 2021

PT Bank Mandiri, Tbk

Rekomendasi: Buy on Weakness

---Harga ditutup membentuk pola long black marubozu yang merupakan sinyal bearish continuation namun masih di atas MA20, stochastic netral dan MACD convergence positif. **Target** harga beli pada level **6.050** dengan *resist* di level 6.200 kemudian 6.300.

BMRI (6.100)



Premier ETF Indonesia Financial

Rekomendasi: Buy

---Harga ditutup di atas EMA5,10 dan membentuk pola white opening marubozu yang merupakan sinyal bullish continuation, stochastic golden cross dan MACD histogram convergence positif. **Target** kenaikan harga pada level **503** kemudian 507 dengan *support* di level 495, *cut loss* jika break 491.

XIIF (499)



Technical Corner

15 September 2021

Syariah Premier ETF JII

Rekomendasi: Buy

---Harga ditutup di atas EMA5,10 dan membentuk pola white marubozu yang merupakan sinyal bullish continuation, stochastic netral dan MACD histogram divergence positif. **Target** kenaikan harga pada level **568** kemudian 573 dengan *support* di level 558, *cut loss* jika break 553.

XIJI (563)



Premier ETF SMinfra18

Rekomendasi: Buy

---Harga ditutup di atas EMA5,10 dan membentuk pola white opening marubozu yang merupakan sinyal bullish continuation, stochastic golden cross dan MACD bullish crossover. **Target** kenaikan harga pada level **322** kemudian 327 dengan *support* di level 312, *cut loss* jika break 307.

XISI (317)



Technical Corner

15 September 2021

PT INDO PREMIER SEKURITAS

Pacific Century Place 16th Floor SCBD Lot 10
Jl. Jend. Sudirman Kav. 52-53
Jakarta Selatan 12190 - Indonesia
p +62 21 5088 7200

ANALYSTS CERTIFICATION

The views expressed in this research report accurately reflect the analyst's personal views about any and all of the subject securities or issuers; and no part of the research analyst's compensation was, is, or will be, directly or indirectly, related to the specific recommendations or views expressed in the report.

DISCLAIMERS

This research is based on information obtained from sources believed to be reliable, but we do not make any representation or warranty nor accept any responsibility or liability as to its accuracy, completeness or correctness. Opinions expressed are subject to change without notice. This document is prepared for general circulation. Any recommendations contained in this document does not have regard to the specific investment objectives, financial situation and the particular needs of any specific addressee. This document is not and should not be construed as an offer or a solicitation of an offer to purchase or subscribe or sell any securities. PT. Indo Premier Sekuritas or its affiliates may seek or will seek investment banking or other business relationships with the companies in this report.

Refer to Important disclosures on the last of this report