

# Technical Corner

2 March 2021

## IHSG

Range: 6.280 – 6.400

---Indeks ditutup di atas EMA5,10 dan membentuk pola white closing marubozu yang merupakan sinyal bullish continuation, stochastic golden cross dan MACD histogram divergence positif.

**Target** kenaikan indeks pada level **6.400** dan 6.460 dengan *support* di level 6.280 kemudian 6.220.

## IHSG (6.339)



## PT Bank Rakyat Indonesia, Tbk

Rekomendasi: Buy

---Harga ditutup di atas EMA5,10 dan membentuk pola white closing marubozu yang merupakan sinyal bullish continuation, stochastic overbought dan MACD histogram divergence positif.

**Target** kenaikan harga pada level **4.910** kemudian 4.990 dengan *support* di level 4.750, *cut loss* jika *break* 4.670.

## BBRI (4.830)



# Technical Corner

2 March 2021

## PT Indosat, Tbk

**Rekomendasi: Buy**

---Harga ditutup di atas EMA5,10 dan membentuk pola long white marubozu yang merupakan sinyal bullish continuation, stochastic netral dan MACD histogram convergence negatif. **Target** kenaikan harga pada level **6.000** kemudian 6.225 dengan *support* di level 5.550, *cut loss* jika *break* 5.325.

## ISAT (5.775)



## PT Pembangunan Perumahan, Tbk

**Rekomendasi: Buy**

---Harga ditutup di atas EMA5,10 dan membentuk pola long white marubozu yang merupakan sinyal bullish continuation, stochastic golden cross dan MACD histogram convergence negatif. **Target** kenaikan harga pada level **1.780** kemudian 1.855 dengan *support* di level 1.630, *cut loss* jika *break* 1.555.

## PTPP (1.705)



# Technical Corner

2 March 2021

## PT Summarecon Agung, Tbk

**Rekomendasi: Buy**

---Harga ditutup di atas EMA5,10 dan membentuk pola long white marubozu yang merupakan sinyal bullish continuation, stochastic netral dan MACD histogram divergence positif. **Target** kenaikan harga pada level **925** kemudian 955 dengan *support* di level 865, *cut loss* jika *break* 835.

## SMRA (895)

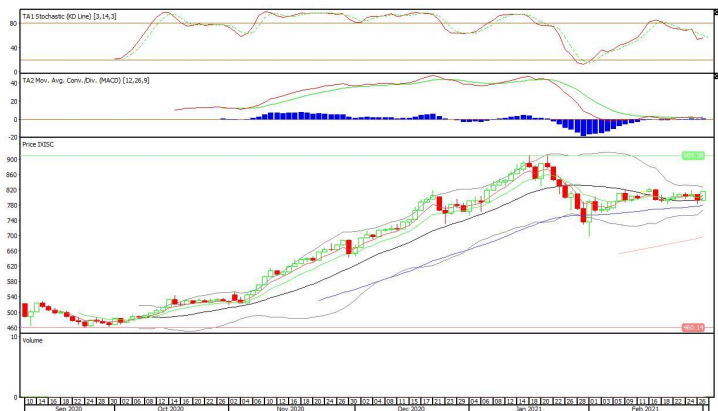


## XISC (815)

## Premier ETF Indonesia SOC

**Rekomendasi: Buy**

---Harga ditutup di atas EMA5,10 dan membentuk pola white marubozu yang merupakan sinyal bullish continuation, stochastic netral dan MACD histogram divergence positif. **Target** kenaikan harga pada level **827** kemudian 839 dengan *support* di level 803, *cut loss* jika *break* 791.



# Technical Corner

2 March 2021

## Pinnacle Core High Dividend ETF

**Rekomendasi: Buy**

---Harga ditutup di atas EMA5,10 dan membentuk pola white marubozu yang merupakan sinyal bullish continuation, stochastic golden cross dan MACD histogram divergence positif. **Target** kenaikan harga pada level **452** kemudian 457 dengan *support* di level 442, *cut loss* jika *break* 437.

## XPDV (447)

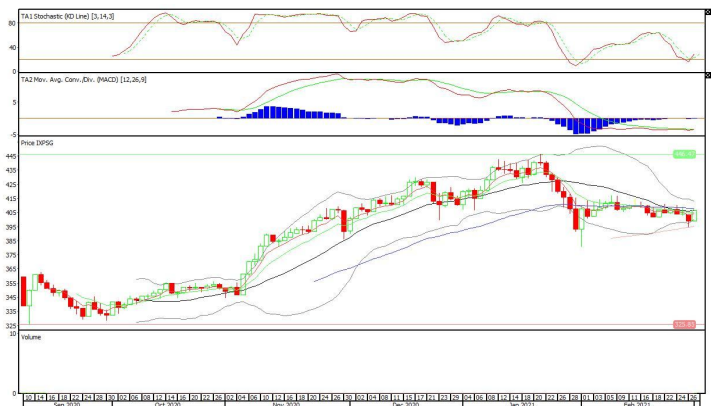


## Pinnacle Indonesia ESG ETF

**Rekomendasi: Buy**

---Harga ditutup di atas EMA5,10 dan membentuk pola white marubozu yang merupakan sinyal bullish continuation, stochastic golden cross dan MACD bullish crossover. **Target** kenaikan harga pada level **413** kemudian 420 dengan *support* di level 399, *cut loss* jika *break* 392.

## XPSG (406)



# Technical Corner

2 March 2021

## **PT INDO PREMIER SEKURITAS**

Pacific Century Place 16th Floor SCBD Lot 10  
Jl. Jend. Sudirman Kav. 52-53  
Jakarta Selatan 12190 - Indonesia  
p +62 21 5088 7200

### **ANALYSTS CERTIFICATION**

The views expressed in this research report accurately reflect the analyst's personal views about any and all of the subject securities or issuers; and no part of the research analyst's compensation was, is, or will be, directly or indirectly, related to the specific recommendations or views expressed in the report.

### **DISCLAIMERS**

This research is based on information obtained from sources believed to be reliable, but we do not make any representation or warranty nor accept any responsibility or liability as to its accuracy, completeness or correctness. Opinions expressed are subject to change without notice. This document is prepared for general circulation. Any recommendations contained in this document does not have regard to the specific investment objectives, financial situation and the particular needs of any specific addressee. This document is not and should not be construed as an offer or a solicitation of an offer to purchase or subscribe or sell any securities. PT. Indo Premier Sekuritas or its affiliates may seek or will seek investment banking or other business relationships with the companies in this report.

**Refer to Important disclosures on the last of this report**