

Technical Corner

17 February 2021

IHSG

Range: 6.250 – 6.330

---Indeks ditutup di atas EMA5,10 dan membentuk pola doji yang merupakan sinyal indecision, stochastic overbought dan MACD histogram divergence positif.

Target kenaikan indeks pada level **6.330** kemudian 6.370 dengan *support* di level 6.250 dan 6.210.

IHSG (6.292)



PT Bank Central Asia, Tbk

Rekomendasi: Buy

---Harga ditutup di atas EMA5,10 dan membentuk pola morning star yang merupakan sinyal bullish reversal, stochastic golden cross dan MACD histogram convergence negatif. **Target** kenaikan harga pada level **35.250** kemudian 35.800 dengan *support* di level 34.150, *cut loss* jika break 33.600.

BBCA (34.700)



Technical Corner

17 February 2021

PT BPD Jawa Barat dan Banten, Tbk

Rekomendasi: Buy

---Harga ditutup di atas EMA5,10 dan membentuk pola long white marubozu yang merupakan sinyal bullish continuation, stochastic netral dan MACD bullish crossover. **Target** kenaikan harga pada level **1.650** kemudian 1.685 dengan *support* di level 1.580, *cut loss* jika *break* 1.545.

BJBR (1.615)

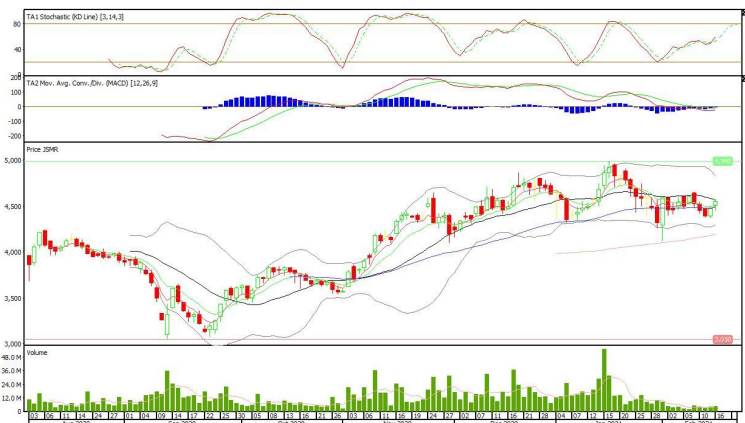


PT Jasa Marga, Tbk

Rekomendasi: Buy

---Harga ditutup di atas EMA5,10 dan membentuk pola long white marubozu yang merupakan sinyal bullish continuation, stochastic netral dan MACD histogram convergence negatif. **Target** kenaikan harga pada level **4.650** kemudian 4.750 dengan *support* di level 4.450, *cut loss* jika *break* 4.350.

JSMR (4.550)



Technical Corner

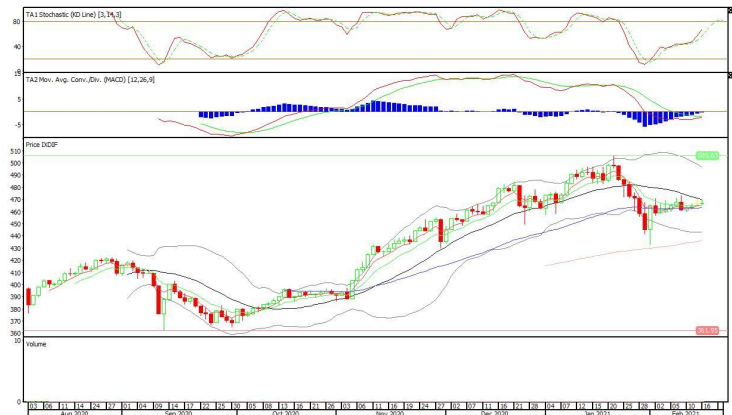
17 February 2021

Danareksa ETF Indonesia Top 40

Rekomendasi: Buy

---Harga ditutup di atas EMA5,10 dan membentuk pola doji yang merupakan sinyal indecision, stochastic netral dan MACD histogram convergence negatif. **Target** kenaikan harga pada level **471** kemudian 475 dengan *support* di level 463, *cut loss* jika *break* 459.

XDIF (467)

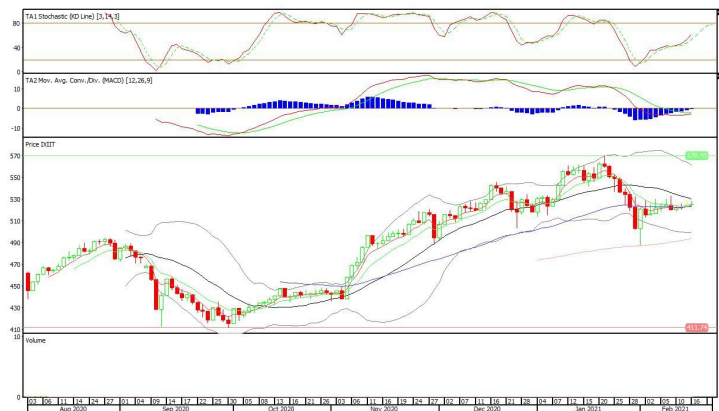


XIIT (525)

Premier ETF IDX 30

Rekomendasi: Buy

---Harga ditutup di atas EMA5,10 dan membentuk pola doji yang merupakan sinyal indecision, stochastic netral dan MACD histogram convergence negatif. **Target** kenaikan harga pada level **529** kemudian 533 dengan *support* di level 521, *cut loss* jika *break* 517.



Technical Corner

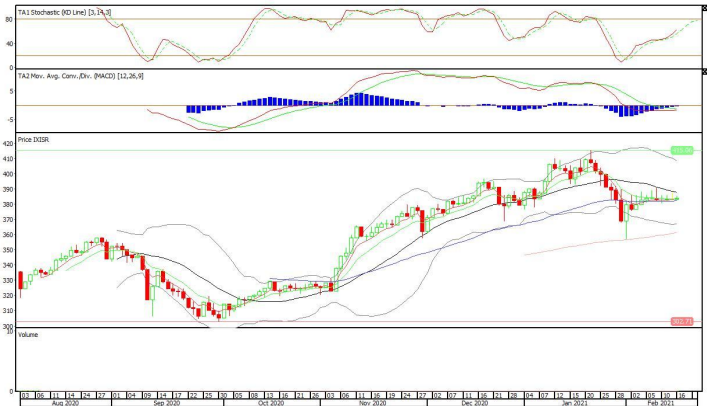
17 February 2021

XISR (384)

Premier ETF SRI-KEHATI

Rekomendasi: Buy

---Harga ditutup di atas EMA5,10 dan membentuk pola small bullish candle, stochastic netral dan MACD histogram convergence negatif. **Target** kenaikan harga pada level **387** kemudian 390 dengan *support* di level 381, *cut loss* jika *break* 378.



PT INDO PREMIER SEKURITAS
 Pacific Century Place 16th Floor SCBD Lot 10
 Jl. Jend. Sudirman Kav. 52-53
 Jakarta Selatan 12190 - Indonesia
 p +62 21 5088 7200

ANALYSTS CERTIFICATION

The views expressed in this research report accurately reflect the analyst's personal views about any and all of the subject securities or issuers; and no part of the research analyst's compensation was, is, or will be, directly or indirectly, related to the specific recommendations or views expressed in the report.

DISCLAIMERS

This research is based on information obtained from sources believed to be reliable, but we do not make any representation or warranty nor accept any responsibility or liability as to its accuracy, completeness or correctness. Opinions expressed are subject to change without notice. This document is prepared for general circulation. Any recommendations contained in this document does not have regard to the specific investment objectives, financial situation and the particular needs of any specific addressee. This document is not and should not be construed as an offer or a solicitation of an offer to purchase or subscribe or sell any securities. PT. Indo Premier Sekuritas or its affiliates may seek or will seek investment banking or other business relationships with the companies in this report.

Refer to Important disclosures on the last of this report