

Technical Corner

4 January 2021

IHSG

Range: 5.910 – 6.050

---Indeks ditutup dengan membentuk pola long black marubozu yang merupakan sinyal bearish continuation namun masih tertahan di atas MA20, stochastic netral dan MACD histogram divergence negatif. **Target** kenaikan indeks pada level **6.050** kemudian 6.120 dengan *support* di level 5.910 dan 5.840.

IHSG (5.979)



PT Bank Central Asia, Tbk

Rekomendasi: Buy

---Harga ditutup di atas EMA5,10 dan membentuk pola hammer yang merupakan sinyal bullish reversal, stochastic netral dan MACD histogram divergence negatif. **Target** kenaikan harga pada level **34.350** kemudian 34.850 dengan *support* di level 33.350 *cut loss* jika *break* 32.850.

BBCA (33.850)



Technical Corner

4 January 2021

PT Indocement Tunggal Prakarsa, Tbk

Rekomendasi: Buy

--- Harga ditutup di atas EMA5,10 dan membentuk pola dragonfly doji yang merupakan sinyal bullish reversal, stochastic netral dan MACD histogram convergence positif. **Target** kenaikan harga pada level **14.850** kemudian 15.225 dengan *support* di level 14.100 *cut loss* jika *break* 13.725.

INTP (14.475)

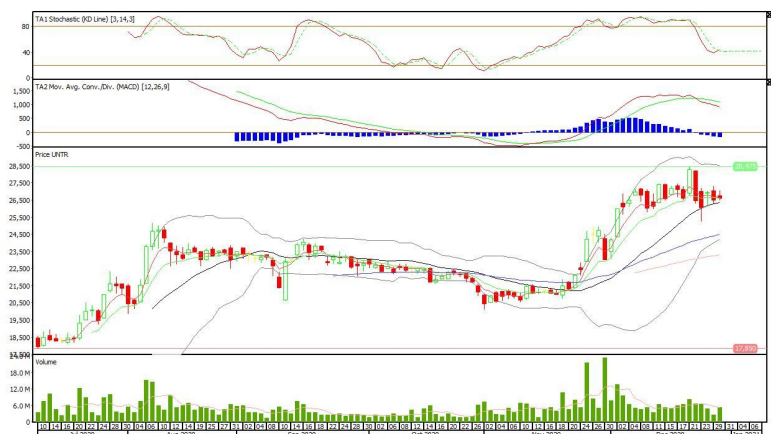


PT United Tractors, Tbk

Rekomendasi: Buy

---Harga ditutup di atas EMA5,10 dan membentuk pola small bearish candle, stochastic golden cross dan MACD histogram divergence positif. **Target** kenaikan harga pada level **27.150** kemudian 27.700 dengan *support* di level 26.050 *cut loss* jika *break* 25.500.

UNTR (26.600)



Technical Corner

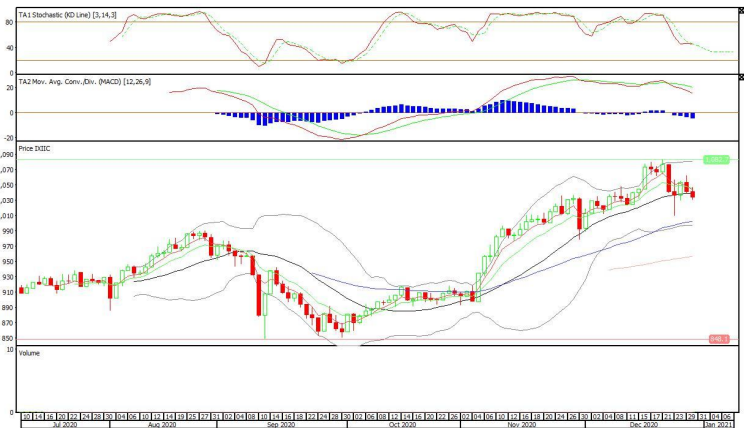
4 January 2021

Premier ETF Indonesia Consumer

Rekomendasi: Sell

--- Harga ditutup di bawah EMA5,10 dan membentuk pola long black marubozu yang merupakan sinyal bearish continuation, stochastic netral dan MACD histogram divergence negatif. **Target** pelemahan harga pada level **1.026** kemudian 1.018 dengan *resist* di level 1.042 kemudian 1.050.

XIIC(1.034)

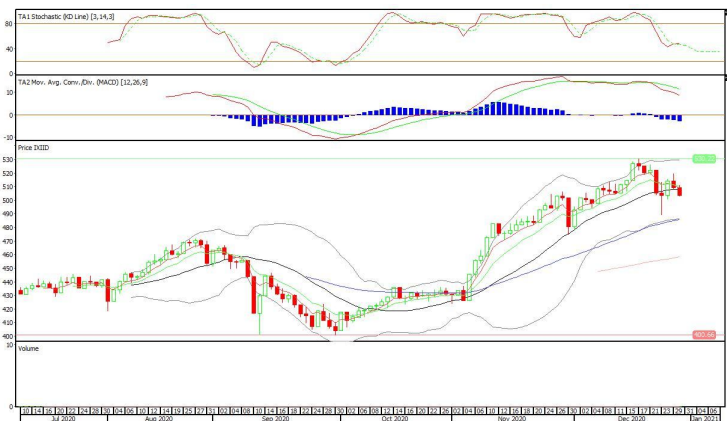


Premier ETF Index IDX30

Rekomendasi: Sell

--- Harga ditutup di bawah EMA5,10 dan membentuk long black marubozu yang merupakan sinyal bearish continuation, stochastic golden cross dan MACD histogram divergence negatif. **Target** pelemahan harga pada level **499** kemudian 494 dengan *resist* di level 509 kemudian 514.

XIID (504)



Technical Corner

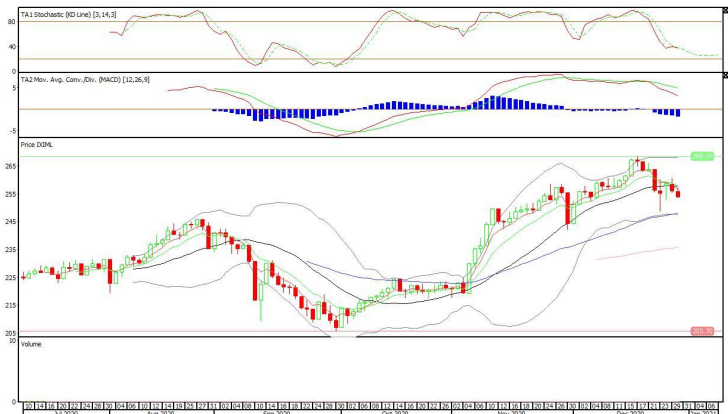
4 January 2021

XIML (254)

Premier ETF MSCI Indonesia Large Cap

Rekomendasi: Sell

--- Harga ditutup di bawah EMA5,10 dan membentuk pola long black marubozu yang merupakan sinyal bearish continuation, stochastic netral dan MACD histogram divergence negatif. **Target** pelemahan harga pada level **252** kemudian 250 dengan *resist* di level 256 kemudian 258.



PT INDO PREMIER SEKURITAS
 Pacific Century Place 16th Floor SCBD Lot 10
 Jl. Jend. Sudirman Kav. 52-53
 Jakarta Selatan 12190 - Indonesia
 p +62 21 5088 7200

ANALYSTS CERTIFICATION

The views expressed in this research report accurately reflect the analyst's personal views about any and all of the subject securities or issuers; and no part of the research analyst's compensation was, is, or will be, directly or indirectly, related to the specific recommendations or views expressed in the report.

DISCLAIMERS

This research is based on information obtained from sources believed to be reliable, but we do not make any representation or warranty nor accept any responsibility or liability as to its accuracy, completeness or correctness. Opinions expressed are subject to change without notice. This document is prepared for general circulation. Any recommendations contained in this document does not have regard to the specific investment objectives, financial situation and the particular needs of any specific addressee. This document is not and should not be construed as an offer or a solicitation of an offer to purchase or subscribe or sell any securities. PT. Indo Premier Sekuritas or its affiliates may seek or will seek investment banking or other business relationships with the companies in this report.

Refer to Important disclosures on the last of this report