

Technical Corner

24 November 2020

IHSG

Range: 5.575 – 5.725

---Indeks ditutup di atas EMA5,10 dan membentuk pola white marubozu yang merupakan sinyal bullish continuation, stochastic overbought dan MACD histogram convergence positif. **Target** kenaikan indeks pada level **5.725** kemudian 5.795 dengan *support* di level 5.575 dan 5.505.

IHSG (5.653)



PT Bank Mandiri, Tbk

Rekomendasi: Buy

---Harga ditutup di atas EMA5,10 dan membentuk pola long white marubozu yang merupakan sinyal bullish continuation, stochastic netral dan MACD histogram convergence positif. **Target** kenaikan harga pada level **6.525** kemudian 6.625 dengan *support* di level 6.275 *cut loss* jika *break* 6.150.

BMRI (6.400)



Technical Corner

24 November 2020

PT Bank BTPN Syariah, Tbk

Rekomendasi: Buy

--- Harga ditutup di atas EMA5,10 dan membentuk pola long white marubozu yang merupakan sinyal bullish continuation, stochastic netral dan MACD histogram convergence negatif. **Target** kenaikan harga pada level **4.400** kemudian 4.540 dengan *support* di level 4.120 *cut loss* jika *break* 3.980.

BTPS (4.260)



PT Ciputra Development, Tbk

Rekomendasi: Buy

---Harga ditutup di atas EMA5,10 dan membentuk pola spinning top yang merupakan sinyal indecision, stochastic netral dan MACD bearish cross over. **Target** kenaikan harga pada level **925** kemudian 945 dengan *support* di level 885 *cut loss* jika *break* 865.

CTRA (905)



Technical Corner

24 November 2020

Premier ETF IDX High Dividend 20

Rekomendasi: Buy

--- Harga ditutup di atas EMA5,10 membentuk pola white marubozu sinyal bullish continuation, stochastic overbought dan MACD histogram convergence positif. **Target** kenaikan harga pada level **459** kemudian 467 dengan *support* di level 443 *cut loss* jika *break* 435.

XIHD (451)

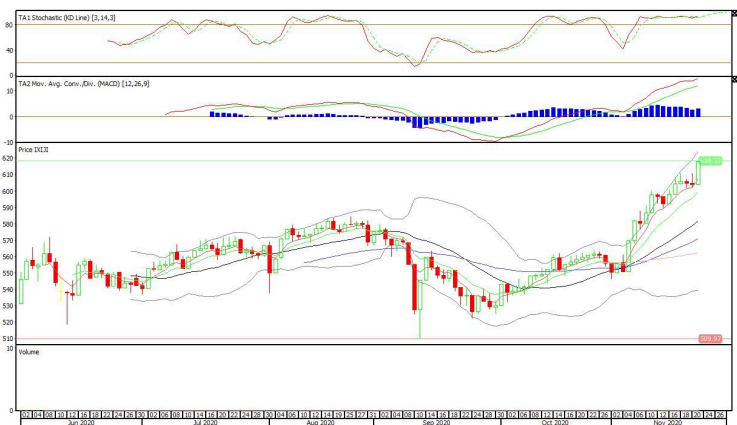


XIJI (618)

Syariah Premier ETF JII

Rekomendasi: Buy

--- Harga ditutup diatas EMA5,10 dan membentuk pola white marubozu yang merupakan sinyal bullish continuation, stochastic golden cross dan MACD histogram divergence positif. **Target** kenaikan harga pada level **628** kemudian 638 dengan *support* di level 608 *cut loss* jika *break* 598.



Technical Corner

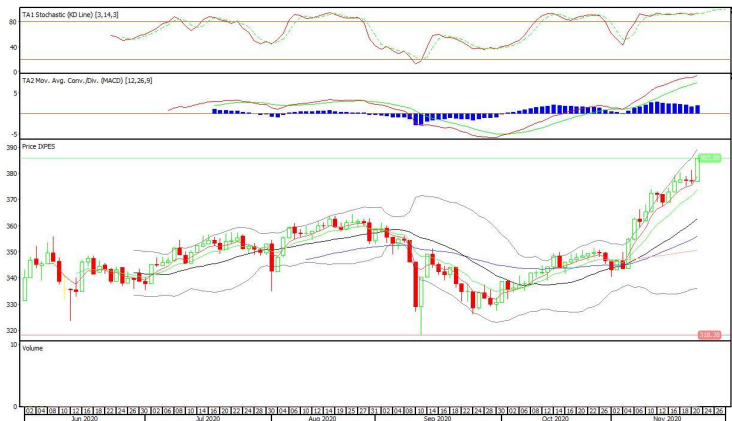
24 November 2020

XPES (386)

Pinnacle Enhanced Sharia ETF

Rekomendasi: Buy

--- Harga ditutup diatas EMA5,10 dan membentuk pola white marubozu yang merupakan sinyal bullish continuation, stochastic overbought dan MACD histogram divergence positif. **Target** kenaikan harga pada level **392** kemudian 398 dengan *support* di level 380 *cut loss* jika *break* 374.



PT INDO PREMIER SEKURITAS
 Pacific Century Place 16th Floor SCBD Lot 10
 Jl. Jend. Sudirman Kav. 52-53
 Jakarta Selatan 12190 - Indonesia
 p +62 21 5088 7200

ANALYSTS CERTIFICATION

The views expressed in this research report accurately reflect the analyst's personal views about any and all of the subject securities or issuers; and no part of the research analyst's compensation was, is, or will be, directly or indirectly, related to the specific recommendations or views expressed in the report.

DISCLAIMERS

This research is based on information obtained from sources believed to be reliable, but we do not make any representation or warranty nor accept any responsibility or liability as to its accuracy, completeness or correctness. Opinions expressed are subject to change without notice. This document is prepared for general circulation. Any recommendations contained in this document does not have regard to the specific investment objectives, financial situation and the particular needs of any specific addressee. This document is not and should not be construed as an offer or a solicitation of an offer to purchase or subscribe or sell any securities. PT. Indo Premier Sekuritas or its affiliates may seek or will seek investment banking or other business relationships with the companies in this report.

Refer to Important disclosures on the last of this report