

Technical Corner

17 September 2020

IHSG

Range: 5.015– 5.100

---Indeks ditutup di bawah EMA5,10 dan membentuk pola long black marubozu yang merupakan sinyal bearish continuation, stochastic netral dan MACD histogram convergence negatif. **Target** pelemahan indeks pada level **5.015** kemudian 4.970 dengan *resist* di level 5.100 dan 5.145.

IHSG (5.058)



PT Puradelta Lestari, Tbk

Rekomendasi: Buy

---Harga ditutup di atas EMA5,10 dan membentuk pola long white marubozu yang merupakan sinyal bullish continuation, stochastic netral dan MACD histogram convergence negatif. **Target** kenaikan harga pada level **238** kemudian 246 dengan *support* di level 220, *cut loss* jika *break* 212.

DMAS (228)



Technical Corner

17 September 2020

PT Mitra Keluarga Karyasehat, Tbk

Rekomendasi: Buy

--- Harga ditutup di atas EMA5,10 dan membentuk pola long white marubozu yang merupakan sinyal bullish continuation, stochastic netral dan MACD histogram convergence negatif. **Target** kenaikan harga pada level **2.370** kemudian 2.420 dengan *support* di level 2.270, *cut loss* jika *break* 2.220.

MIKA (2.320)



PT Indah Kiat Pulp & Paper, Tbk

Rekomendasi: Buy

---Harga ditutup di atas MA20 dan membentuk pola long white marubozu yang merupakan sinyal bullish continuation, stochastic netral dan MACD histogram convergence negatif. **Target** kenaikan harga pada level **9.975** kemudian 10.500 dengan *support* di level 8.850, *cut loss* jika *break* 8.275.

INKP (9.400)



Technical Corner

17 September 2020

FTSE Indo Low Volatility factor Index

Rekomendasi: SELL

--- Harga ditutup di bawah EMA5,10 dan membentuk pola black closing marubozu yang merupakan sinyal bearish continuation, stochastic netral dan MACD histogram divergence negatif. **Target** pelemahan harga pada level **97** kemudian 95 dengan *resist* di level 99 dan 101.

XILV (98)

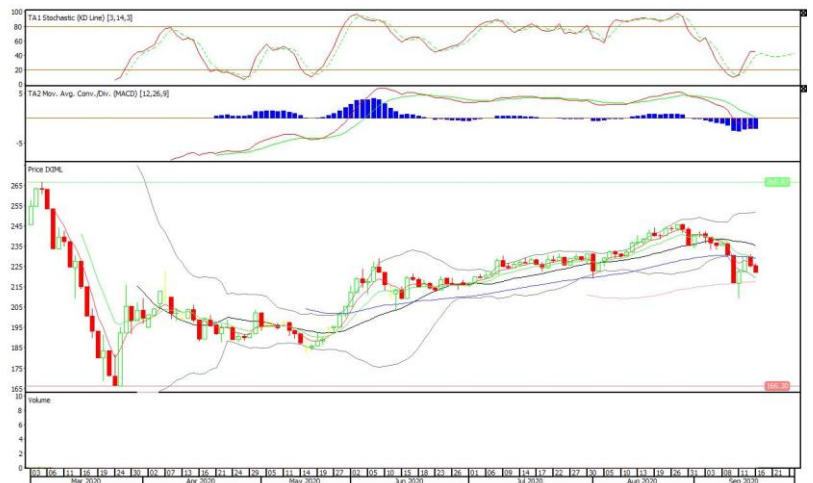


Premier ETF MSCI Indo Large Cap

Rekomendasi: SELL

--- Harga ditutup di bawah EMA5,10 dan membentuk pola long black marubozu yang merupakan sinyal bearish continuation, stochastic netral dan MACD histogram divergence negatif. **Target** pelemahan harga pada level **219** kemudian 217 dengan *resist* di level 225 kemudian 229.

XIML (222)



Technical Corner

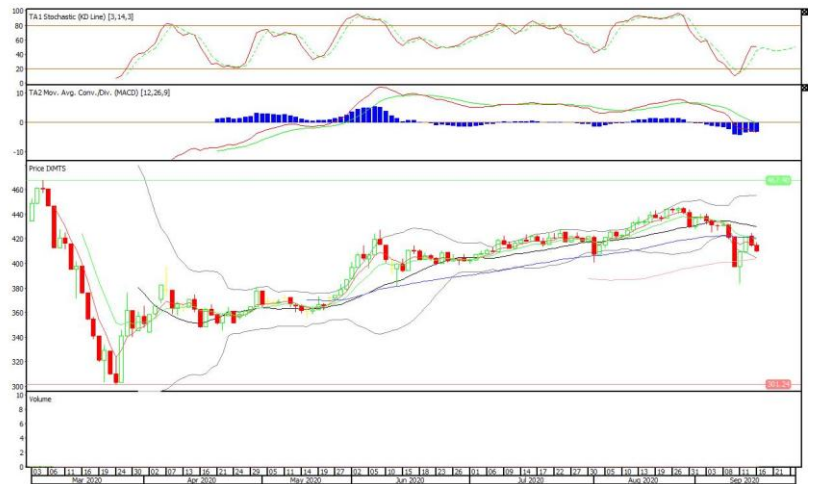
17 September 2020

XMTS (410)

ETF MNC36 Likuid

Rekomendasi: SELL

--- Harga ditutup di bawah EMA5,10 dan membentuk pola long black marubozu yang merupakan sinyal bearish continuation, stochastic netral dan MACD histogram divergence negatif. **Target** pelemahan harga pada level **405** kemudian 400 dengan *resist* di level 415 kemudian 420.



PT INDO PREMIER SEKURITAS

Pacific Century Place 16th Floor SCBD Lot 10
 Jl. Jend. Sudirman Kav. 52-53
 Jakarta Selatan 12190 - Indonesia
 p +62 21 5088 7200

ANALYSTS CERTIFICATION

The views expressed in this research report accurately reflect the analyst's personal views about any and all of the subject securities or issuers; and no part of the research analyst's compensation was, is, or will be, directly or indirectly, related to the specific recommendations or views expressed in the report.

DISCLAIMERS

This research is based on information obtained from sources believed to be reliable, but we do not make any representation or warranty nor accept any responsibility or liability as to its accuracy, completeness or correctness. Opinions expressed are subject to change without notice. This document is prepared for general circulation. Any recommendations contained in this document does not have regard to the specific investment objectives, financial situation and the particular needs of any specific addressee. This document is not and should not be construed as an offer or a solicitation of an offer to purchase or subscribe or sell any securities. PT. Indo Premier Sekuritas or its affiliates may seek or will seek investment banking or other business relationships with the companies in this report.

Refer to Important disclosures on the last of this report