

Technical Corner

26 August 2020

IHSG

Range: 5.275 – 5.390

---Indeks ditutup di atas EMA5,10 dan membentuk pola candle white opening marubozu yang merupakan sinyal bullish continuation, stochastic konsisten bergerak pada area overbought dan MACD histogram divergence positif. **Target** kenaikan indeks pada level **5.390** kemudian 5.445 dengan *support* di level 5.275 dan 5.225.

IHSG (5.339)



PT Aces Hardware Indonesia, Tbk

Rekomendasi: Buy

---Harga ditutup di atas EMA5,10 dan membentuk pola candle long white marubozu yang merupakan sinyal bullish continuation, stocahtic netral dan MACD histogram convergence negatif. **Target** kenaikan harga pada level **1.685** kemudian 1.710 dengan *support* di level 1.620, *cut loss* jika *break* 1.590.

ACES (1.650)



Technical Corner

26 August 2020

PT Bank Central Asia, Tbk

Rekomendasi: Buy

--- Harga ditutup di atas EMA5,10 dan membentuk pola candle long white marubozu yang merupakan sinyal bullish continuation, stochastic konsisten bergerak pada area overbought dan MACD histogram divergence positif. **Target** kenaikan harga pada level **32.125** kemudian 32.425 dengan *support* di level 31.525, *cut loss* jika break 31.225.

BBCA (31.825)



PT Indofood CBP Sukses Makmur, Tbk

Rekomendasi: Buy

---Harga ditutup di atas EMA5,10 dan membentuk pola candle long white marubozu yang merupakan sinyal bullish continuation, stochastic netral dan MACD histogram convergence positif. **Target** kenaikan harga pada level **10.625** kemudian 10.750 dengan *support* di level 10.200, *cut loss* jika break 10.025.

ICBP (10.425)



Technical Corner

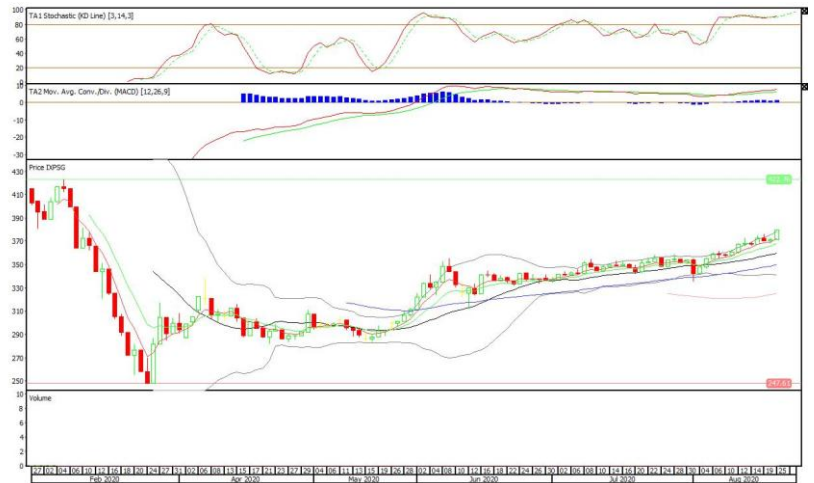
26 August 2020

Pinnacle Indonesia ESG ETF

Rekomendasi: Buy

---Harga ditutup di atas EMA5,10 dan membentuk pola candle white marubozu yang merupakan sinyal bullish continuation, stochastic konsisten bergerak pada area overbought dan MACD histogram divergence positif. **Target** kenaikan harga pada level **387** kemudian 395 dengan *support* di level 371, *cut loss* jika *break* 363.

XPSG (380)



Premier ETF Sminfra18

Rekomendasi: Buy

--- Harga ditutup di atas EMA5,10 dan membentuk pola candle white opening marubozu yang merupakan sinyal bullish continuation, stochastic konsisten bergerak pada area overbought dan MACD histogram divergence positif. **Target** kenaikan harga pada level **289** kemudian 294 dengan *support* di level 279, *cut loss* jika *break* 274.

XISI (284)



Technical Corner

26 August 2020

Premier ETF Sri-Kehati

Rekomendasi: Buy

--- Harga ditutup di atas EMA5,10 dan membentuk pola candle white opening marubozu yang merupakan sinyal bullish continuation, stochastic konsisten bergerak pada area overbought dan MACD histogram divergence positif. **Target** kenaikan harga pada level **361** kemudian 367 dengan *support* di level 349, *cut loss* jika *break* 343.

XISR (355)



PT INDO PREMIER SEKURITAS

Pacific Century Place 16th Floor SCBD Lot 10
 Jl. Jend. Sudirman Kav. 52-53
 Jakarta Selatan 12190 - Indonesia
 p +62 21 5088 7200

ANALYSTS CERTIFICATION

The views expressed in this research report accurately reflect the analyst's personal views about any and all of the subject securities or issuers; and no part of the research analyst's compensation was, is, or will be, directly or indirectly, related to the specific recommendations or views expressed in the report.

DISCLAIMERS

This research is based on information obtained from sources believed to be reliable, but we do not make any representation or warranty nor accept any responsibility or liability as to its accuracy, completeness or correctness. Opinions expressed are subject to change without notice. This document is prepared for general circulation. Any recommendations contained in this document does not have regard to the specific investment objectives, financial situation and the particular needs of any specific addressee. This document is not and should not be construed as an offer or a solicitation of an offer to purchase or subscribe or sell any securities. PT. Indo Premier Sekuritas or its affiliates may seek or will seek investment banking or other business relationships with the companies in this report.

Refer to Important disclosures on the last of this report