

Technical Corner

10 July 2020

IHSG

Range: 5.020 – 5.095

---Indeks ditutup tepat di upper band dan membentuk pola candle small bearish , stochastic overbought dan MACD histogram convergence positif. **Target** pelemahan indeks pada level **5.020** kemudian 4.980 dengan *resist* di level 5.095 dan 5.130.

IHSG (5.053)



PT Bukit Asam, Tbk

Rekomendasi: Buy

---Harga ditutup di atas EMA5,10 dan membentuk pola candle spinning top yang merupakan sinyal indecision, stochastic netral dan MACD histogram convergence negatif. **Target** kenaikan harga pada level **2.140** kemudian 2.180 dengan *support* di level 2.060, *cut loss* jika *break* 2.020.

PTBA (2.100)



Technical Corner

10 July 2020

PT Ciputra Development, Tbk

Rekomendasi: Buy

--- Harga ditutup di atas MA20 dan membentuk pola candle white opening marubozu yang merupakan sinyal bullish continuation, stochastic netral dan MACD bullish cross over. **Target** kenaikan harga pada level **715** kemudian 740 dengan *support* di level 640, *cut loss* jika *break* 615.

CTRA (675)



PT Wijaya Karya, Tbk

Rekomendasi: Buy

---Harga ditutup di atas EMA5,10 dan membentuk pola candle long white marubozu yang merupakan sinyal bullish continuation, stochastic netral dan MACD histogram convergence negatif. **Target** kenaikan harga pada level **1.315** kemudian 1.360 dengan *support* di level 1.220, *cut loss* jika *break* 1.185.

WIKA (1.270)



Technical Corner

10 July 2020

Pinnacle FTSE Indonesia ETF

Rekomendasi: SELL

---Harga ditutup dengan membentuk pola candle long black marubozu yang merupakan sinyal bearish continuation, stochastic overbought dan MACD histogram convergence positif. **Target** pelemahan harga pada level **440** kemudian 438 dengan *resist* di level 452 dan 458.

XPFT (446)



Pinnacle IDX30 ETF

Rekomendasi: SELL

--- Harga ditutup dengan membentuk pola candle black closing marubozu yang merupakan sinyal bearish continuation, stochastic dead cross dan MACD histogram convergence positif. **Target** pelemahan harga pada level **429** kemudian 426 dengan *resist* di level 440 dan 445.

XPID (434)



Technical Corner

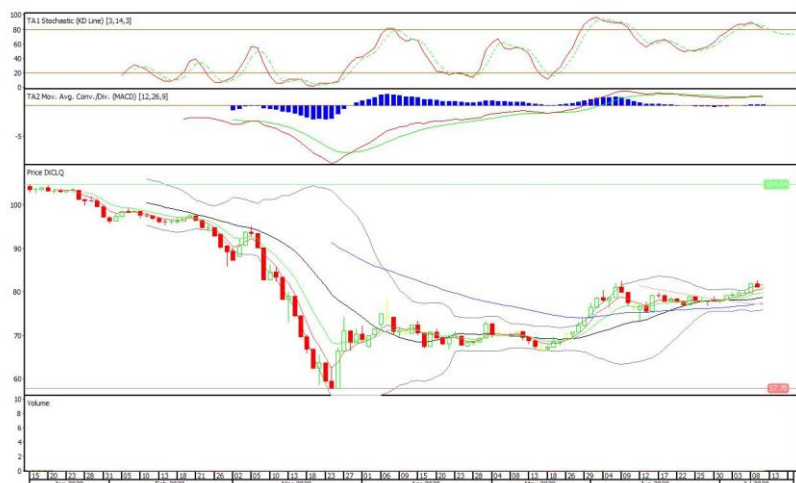
10 July 2020

Cipta ETF Indeks LQ45

Rekomendasi: SELL

---Harga ditutup dengan membentuk pola black opening marubozu yang merupakan sinyal bearish continuation, stochastic dead cross dan MACD histogram convergence positif. **Target** pelemahan harga pada level **80** kemudian 79 dengan *resist* di level 82 dan 83.

XCLQ (81)



PT INDO PREMIER SEKURITAS

Pacific Century Place 16th Floor SCBD Lot 10
 Jl. Jend. Sudirman Kav. 52-53
 Jakarta Selatan 12190 - Indonesia
 p +62 21 5088 7200

ANALYSTS CERTIFICATION

The views expressed in this research report accurately reflect the analyst's personal views about any and all of the subject securities or issuers; and no part of the research analyst's compensation was, is, or will be, directly or indirectly, related to the specific recommendations or views expressed in the report.

DISCLAIMERS

This research is based on information obtained from sources believed to be reliable, but we do not make any representation or warranty nor accept any responsibility or liability as to its accuracy, completeness or correctness. Opinions expressed are subject to change without notice. This document is prepared for general circulation. Any recommendations contained in this document does not have regard to the specific investment objectives, financial situation and the particular needs of any specific addressee. This document is not and should not be construed as an offer or a solicitation of an offer to purchase or subscribe or sell any securities. PT. Indo Premier Sekuritas or its affiliates may seek or will seek investment banking or other business relationships with the companies in this report.

Refer to Important disclosures on the last of this report