

# Technical Corner

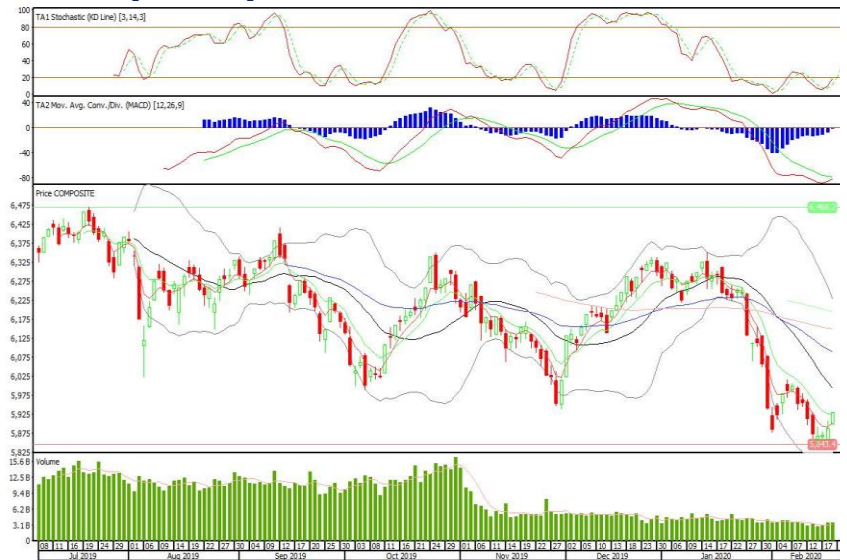
20 Februari 2020

**IHSG**

**Range: 5.895 – 5.960**

---Indeks ditutup di atas EMA5,10 dan membentuk pola white marubozu yang merupakan sinyal bullish continuation, stochastic oversold dan MACD bullish cross over. Target kenaikan indeks pada level 5.960 kemudian 5.990 dengan support di level 5.895 dan 5.865.

**IHSG (5.928)**



**Astra International**

**Rekomendasi: Buy**

---Candle ditutup di atas EMA5,10 dan membentuk pola white opening marubozu yang merupakan sinyal bullish continuation, stochastic netral dan MACD histogram convergence negatif. Target kenaikan harga pada level 6.350 kemudian 6.425 dengan support di level 6.150, cut loss jika break 6.050.

**ASII (6.250)**



**Jasa Marga**

**Rekomendasi: Buy**

---Candle ditutup di atas EMA5,10 dan membentuk pola white opening marubozu yang merupakan sinyal bullish continuation, stochastic overbought dan MACD histogram divergence positif. Target kenaikan harga pada level 5.100 kemudian 5.200 dengan *support* di level 4.900, *cut loss* jika *break* 4.800.

**JSMR (5.000)**



**Bank Tabungan Negara**

**Rekomendasi: Buy**

---Candle ditutup di atas MA20 dan membentuk pola doji yang merupakan sinyal indecision, stochastic netral dan MACD histogram divergence positif. Target kenaikan harga pada level 1.940 kemudian 1.990 dengan *support* di level 1.850, *cut loss* jika *break* 1.800.

**BBTN (2.050)**

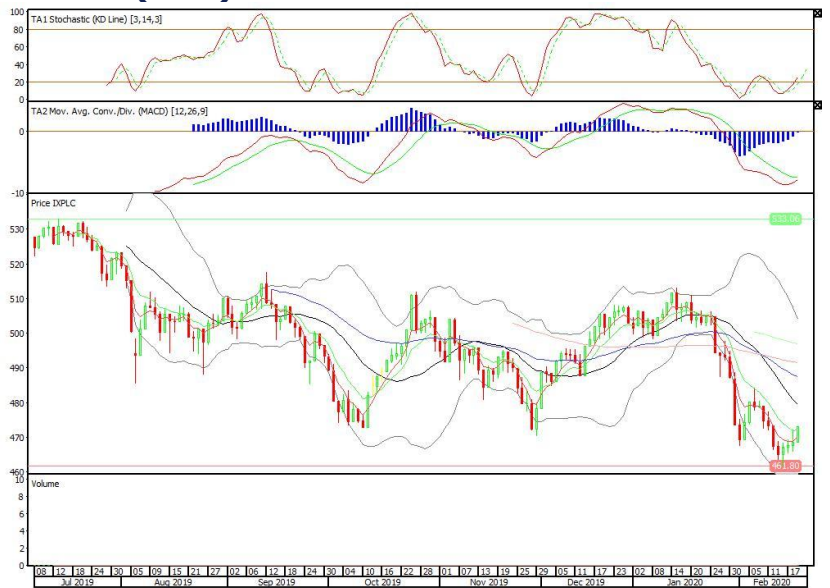


**Pinnacle Indonesia Large-Cap ETF**

**Rekomendasi: Buy**

---Candle ditutup di atas EMA5,10 dengan membentuk pola white marubozu yang merupakan sinyal bullish continuation, stochastic netral, MACD histogram convergence negatif. Target kenaikan harga pada level 477 kemudian 480 dengan support di level 468, cut loss jika break 463.

**XPLC (472)**

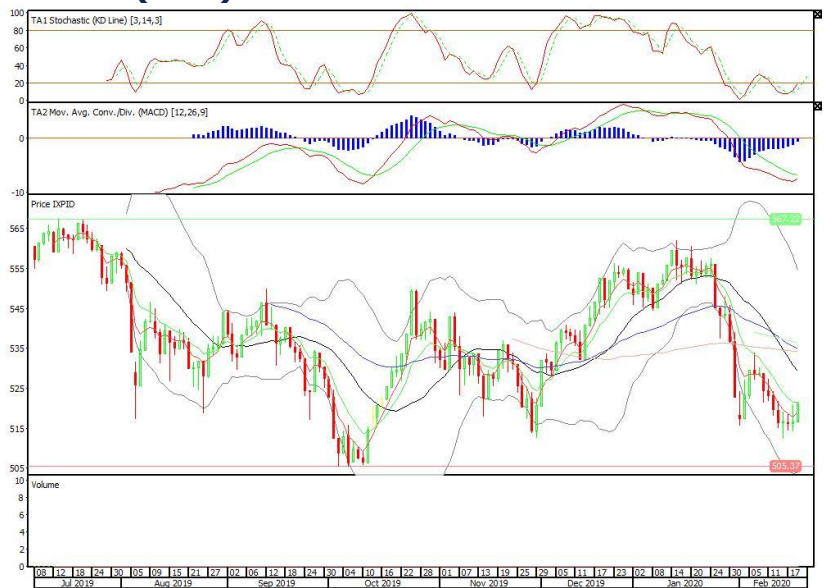


**Pinnacle IDX30 ETF**

**Rekomendasi: Buy**

---Candle ditutup di atas EMA5 dengan membentuk pola white marubozu yang merupakan sinyal bullish continuation, stochastic oversold, MACD histogram convergence negatif. Target kenaikan harga pada level 525 kemudian 531 dengan support di level 516, cut loss jika break 511.

**XPID (521)**

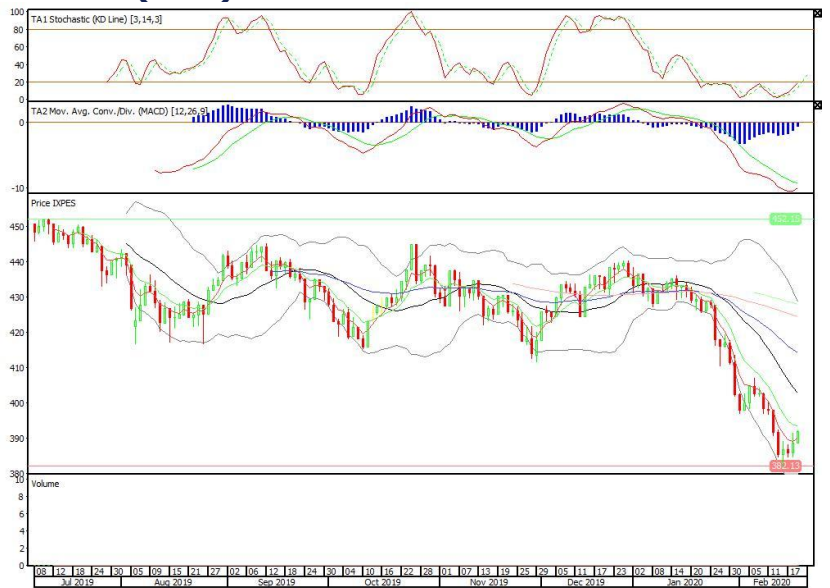


**Pinnacle Enhanced Sharia ETF**

**Rekomendasi: Buy**

---Candle ditutup di atas EMA5 dengan membentuk pola white marubozu yang merupakan sinyal bullish continuation, stochastic oversold, MACD histogram convergence negatif. Target kenaikan harga pada level 394 kemudian 397 dengan *support* di level 388, *cut loss* jika *break* 385.

**XPES (391)**



**Head Office****PT INDO PREMIER SEKURITAS**

Pacific Century Place 16/F, SCBD Lot 10  
Jl. Jend. Sudirman Kav.52-53  
Jakarta 12190 - Indonesia  
p +62.21.5088.7200

**ANALYSTS CERTIFICATION.**

The views expressed in this research report accurately reflect the analyst's personal views about any and all of the subject securities or issuers; and no part of the research analyst's compensation was, is, or will be, directly or indirectly, related to the specific recommendations or views expressed in the report.

**DISCLAIMERS**

This research is based on information obtained from sources believed to be reliable, but we do not make any representation or warranty nor accept any responsibility or liability as to its accuracy, completeness or correctness. Opinions expressed are subject to change without notice. This document is prepared for general circulation. Any recommendations contained in this document does not have regard to the specific investment objectives, financial situation and the particular needs of any specific addressee. This document is not and should not be construed as an offer or a solicitation of an offer to purchase or subscribe or sell any securities. PT. Indo Premier Sekuritas or its affiliates may seek or will seek investment banking or other business relationships with the companies in this report.