

# Technical Corner

17 Februari 2020

**IHSG**

**Range: 5.835 – 5.895**

---Indeks ditutup dengan membentuk pola spinning top yang merupakan sinyal indecision, stochastic oversold dan MACD histogram convergence negatif. Target kenaikan indeks pada level 5.895 kemudian 5.925 dengan support di level 5.835 dan 5.805.

**IHSG (5.866)**



**Indofood Sukses Makmur**

**Rekomendasi: Buy**

---Candle ditutup dengan membentuk pola morning star yang merupakan sinyal bullish reversal, stochastic golden cross dan MACD histogram divergence negatif. Target kenaikan harga pada level 7.275 kemudian 7.400 dengan support di level 7.000, cut loss jika break 6.900.

**INDF (7.150)**



**Bukit Asam**

**Rekomendasi: Buy**

---Candle ditutup tepat di atas MA20 dan membentuk pola long white marubozu yang merupakan sinyal bullish continuation, stochastic netral dan MACD divergence positif. Target kenaikan harga pada level 2.400 kemudian 2.460 dengan *support* di level 2.270, *cut loss* jika *break* 2.225.

**PTBA (2.330)**



**Bank Negara Indonesia**

**Rekomendasi: Buy**

---Candle ditutup di atas MA20 dan membentuk pola long white marubozu yang merupakan sinyal bullish continuation, stochastic netral dan MACD histogram divergence positif. Target kenaikan harga pada level 7.700 kemudian 7.850 dengan *support* di level 7.350, *cut loss* jika *break* 7.200.

**BBNI (7.525)**

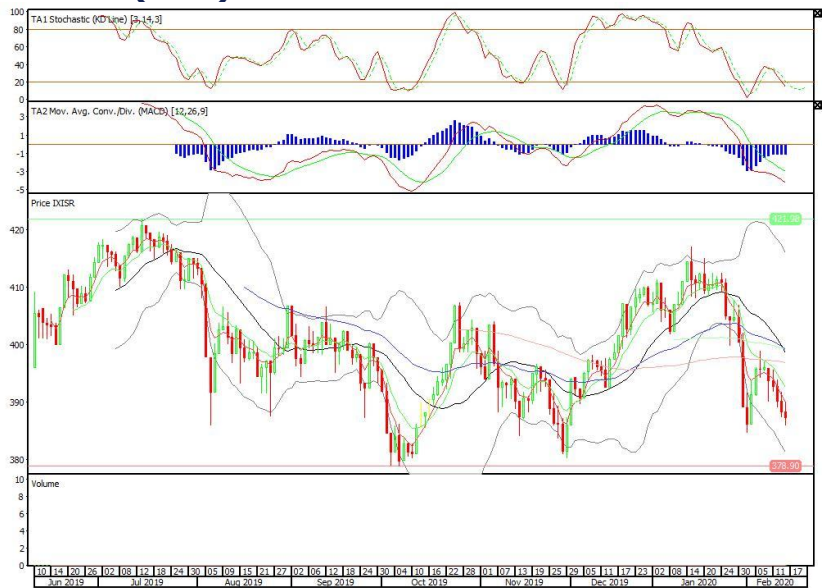


**Premier ETF SRI-KEHATI**

**Rekomendasi: SELL**

---Candle ditutup di bawah EMA5,10 dengan membentuk pola long black marubozu yang merupakan sinyal bearish continuation, stochastic oversold, MACD histogram divergence negatif. Target pelemahan harga pada level 385 kemudian 383 dengan *resist* di level 389 dan 391.

**XISR (387)**

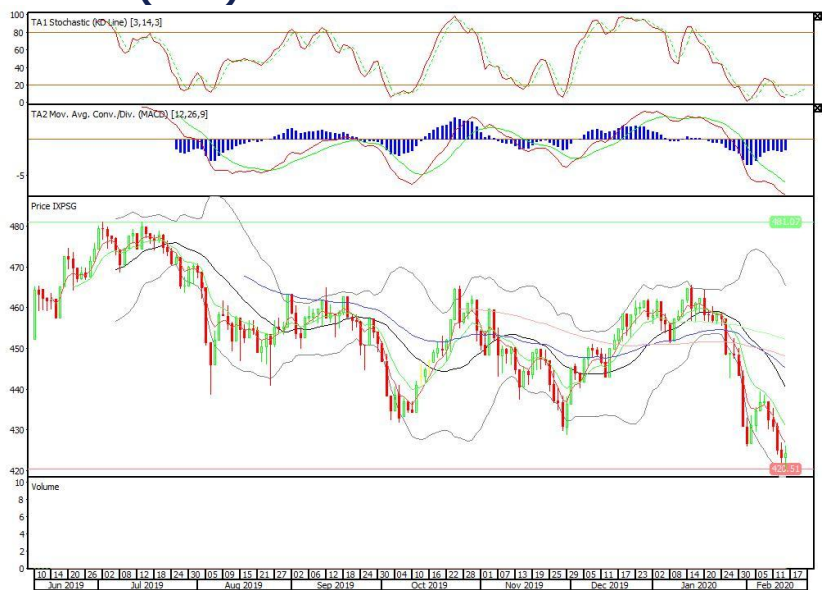


**Pinnacle Indonesia ESG ETF**

**Rekomendasi: Buy**

---Candle ditutup di atas lowerband dengan membentuk pola long white marubozu yang merupakan sinyal bullish continuation, stochastic oversold, MACD histogram convergence negatif. Target kenaikan harga pada level 426 kemudian 429 dengan *support* di level 421, *cut loss* jika *break* 418.

**XPSG (424)**

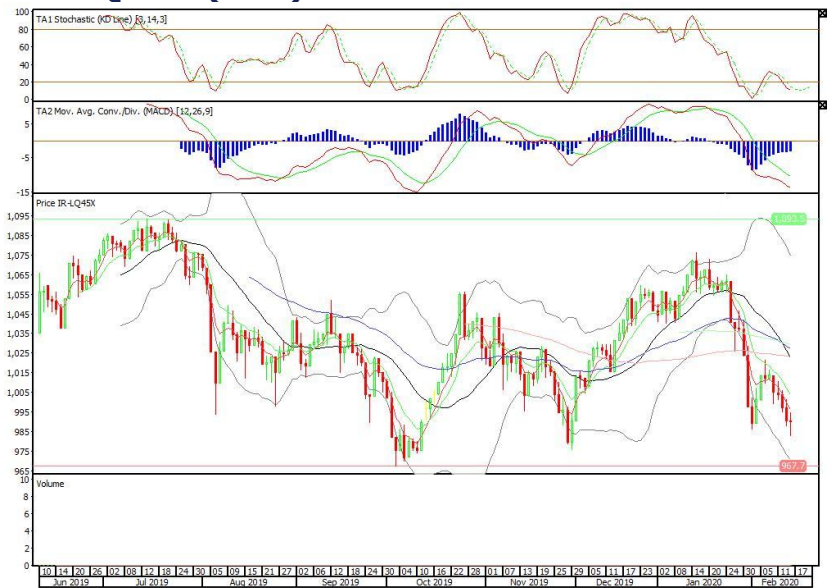


Premier ETF LQ-45

**Rekomendasi: Buy**

---Candle ditutup di atas lowerband dengan membentuk pola doji yang merupakan sinyal indecision stochastic oversold, MACD histogram convergence negatif. Target kenaikan harga pada level 995 kemudian 1.001 dengan *support* di level 985, *cut loss* jika *break* 978.

**R-LQ45X (990)**



**Head Office****PT INDO PREMIER SEKURITAS**

Pacific Century Place 16/F, SCBD Lot 10

Jl. Jend. Sudirman Kav.52-53

Jakarta 12190 - Indonesia

p +62.21.5088.7200

**ANALYSTS CERTIFICATION.**

The views expressed in this research report accurately reflect the analyst's personal views about any and all of the subject securities or issuers; and no part of the research analyst's compensation was, is, or will be, directly or indirectly, related to the specific recommendations or views expressed in the report.

**DISCLAIMERS**

This research is based on information obtained from sources believed to be reliable, but we do not make any representation or warranty nor accept any responsibility or liability as to its accuracy, completeness or correctness. Opinions expressed are subject to change without notice. This document is prepared for general circulation. Any recommendations contained in this document does not have regard to the specific investment objectives, financial situation and the particular needs of any specific addressee. This document is not and should not be construed as an offer or a solicitation of an offer to purchase or subscribe or sell any securities. PT. Indo Premier Sekuritas or its affiliates may seek or will seek investment banking or other business relationships with the companies in this report.