

Technical Corner

5 Desember 2019

IHSG

Range: 6.090 – 6.145

---Indeks ditutup bertahan di atas MA20 dengan membentuk pola small bearish candle, stochastic netral dan MACD histogram divergence positif. Target kenaikan indeks pada level 6.145 kemudian 6.175 dengan *support* di level 6.090 dan 6.060.

IHSG (6.112)



Jasa Marga

Rekomendasi: Buy

---Candle ditutup di atas EMA5,10 dan membentuk pola long white marubozu yang merupakan sinyal bullish continuation, stochastic overbought dan MACD histogram divergence positif. Target kenaikan harga pada level 5.475 kemudian 5.650 dengan *support* di level 5.100, *cut loss* jika *break* 4.940.

JSMR (5.275)



Adaro Energy

Rekomendasi: Buy

---Candle ditutup di atas MA20 dan membentuk pola long white marubozu yang merupakan sinyal bullish continuation, stochastic netral dan MACD bullish cross over. Target kenaikan harga pada level 1.425 kemudian 1.485 dengan *support* di level 1.300, *cut loss* jika *break* 1.245.

ADRO (1.360)



Telekomunikasi Indonesia

Rekomendasi: Buy

---Candle ditutup di atas EMA5,10 dengan membentuk pola white closing marubozu yang merupakan sinyal bullish continuation, stochastic netral, MACD histogram divergence positif. Target kenaikan harga pada level 4.060 kemudian 4.130 dengan *support* di level 3.920, *cut loss* di level 3.860.

TLKM (3.990)

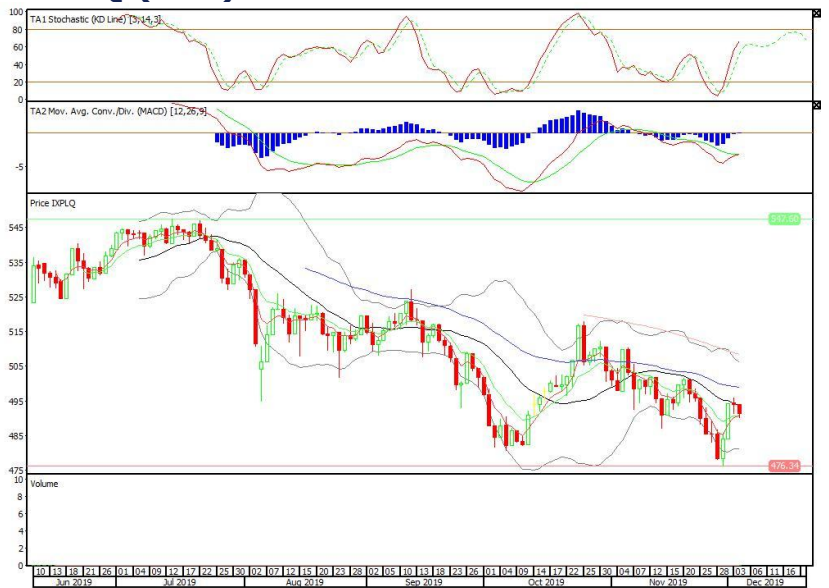


Pinnacle Enhanced Liquid ETF

Rekomendasi: SELL

---Candle ditutup di bawah MA20 dengan membentuk pola black opening marubozu yang merupakan sinyal bearish continuation, stochastic netral, MACD histogram divergence positif. Target pelemahan harga pada level 488 kemudian 486 dengan *resist* di level 493 dan 495.

XPLQ (491)

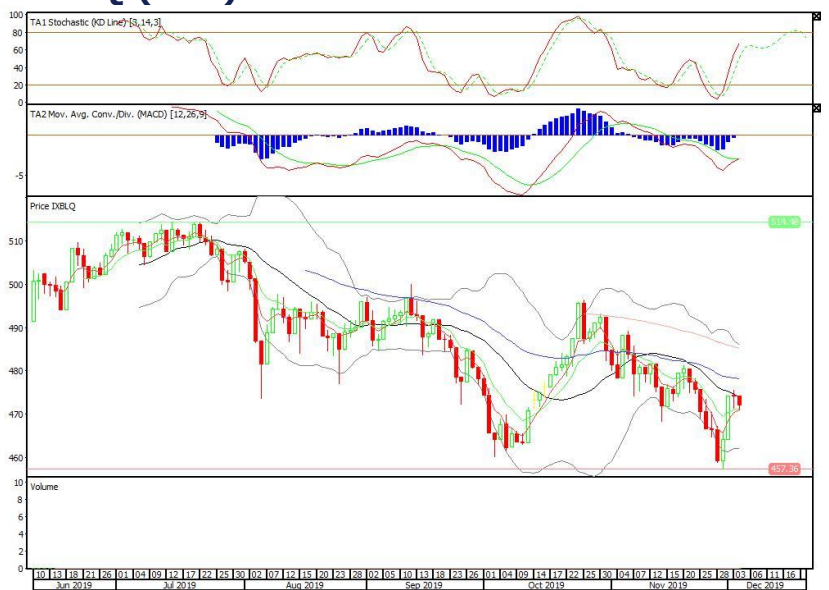


Batavia Smart Liquid ETF

Rekomendasi: SELL

---Candle ditutup di bawah MA20 dengan membentuk pola black opening marubozu yang merupakan sinyal bearish continuation, stochastic netral, MACD histogram convergence negatif. Target pelemahan harga pada level 469 kemudian 467 dengan *resist* di level 474 dan 476.

XBLQ (472)

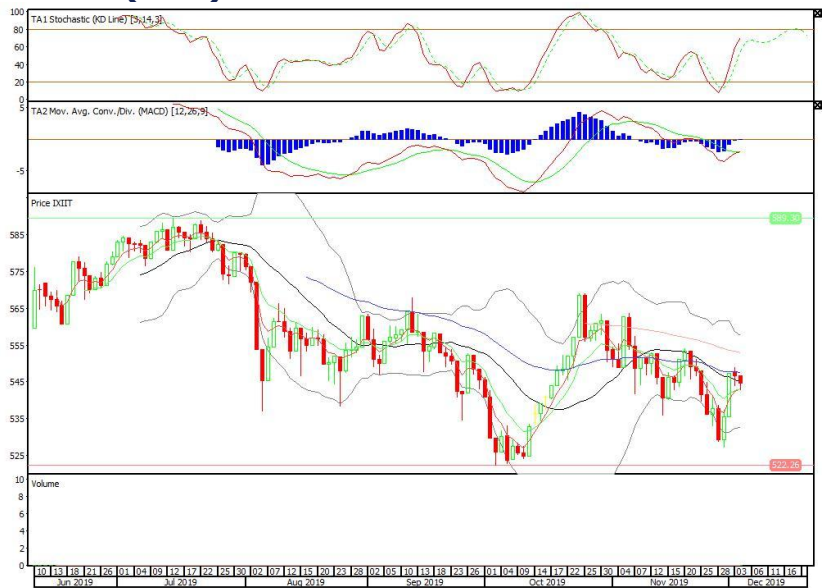


Premier ETF IDX30

Rekomendasi: SELL

---Candle ditutup di bawah MA20 dengan membentuk pola black opening marubozu yang merupakan sinyal bearish continuation, stochastic netral, MACD histogram divergence positif. Target pelemahan harga pada level 542 kemudian 540 dengan *resist* di level 546 dan 548.

XIIT (544)



Head Office**PT INDO PREMIER SEKURITAS**

Pacific Century Place 16/F, SCBD Lot 10
Jl. Jend. Sudirman Kav.52-53
Jakarta 12190 - Indonesia
p +62.21.5088.7200

ANALYSTS CERTIFICATION.

The views expressed in this research report accurately reflect the analyst's personal views about any and all of the subject securities or issuers; and no part of the research analyst's compensation was, is, or will be, directly or indirectly, related to the specific recommendations or views expressed in the report.

DISCLAIMERS

This research is based on information obtained from sources believed to be reliable, but we do not make any representation or warranty nor accept any responsibility or liability as to its accuracy, completeness or correctness. Opinions expressed are subject to change without notice. This document is prepared for general circulation. Any recommendations contained in this document does not have regard to the specific investment objectives, financial situation and the particular needs of any specific addressee. This document is not and should not be construed as an offer or a solicitation of an offer to purchase or subscribe or sell any securities. PT. Indo Premier Sekuritas or its affiliates may seek or will seek investment banking or other business relationships with the companies in this report.