

# Technical Corner

4 Desember 2019

**IHSG**

**Range: 6.095 – 6.165**

---Indeks di atas MA20 dan membentuk pola spinning top yang merupakan sinyal indecision, stochastic netral dan MACD divergence positif. Target pelemahan indeks pada level 6.095 kemudian 6.065 dan *resist* di level 6.165 dan 6.195.

**IHSG (6.130)**



**Perusahaan Gas Negara**

**Rekomendasi: Buy**

---Candle ditutup di atas EMA50 dan membentuk pola three white soldier yang merupakan sinyal bullish reversal, stochastic netral dan MACD histogram divergence positif. Target kenaikan harga pada level 2.120 kemudian 2.180 dengan *support* di level 2.000, *cut loss* jika *break* 1.945.

**PGAS (2.060)**



**Media Nusantara Citra**

**Rekomendasi: Buy**

---Candle ditutup di atas MA100 dan membentuk pola white opening marubozu yang merupakan sinyal bullish continuation, stochastic netral dan MACD histogram convergence negatif. Target kenaikan harga pada level 1.395 kemudian 1.440 dengan support di level 1.270, cut loss jika break 1.210.

**MNCN (1.330)**



**Charoen Pokphand Indonesia**

**Rekomendasi: Buy**

---Candle ditutup di atas EMA5,10 dengan membentuk pola long white marubozu yang merupakan sinyal bullish continuation, stochastic netral, MACD histogram convergence negatif. Target kenaikan harga pada level 7.200 kemudian 7.350 dengan support di level 6.825, cut loss di level 6.650.

**CPIN (7.000)**

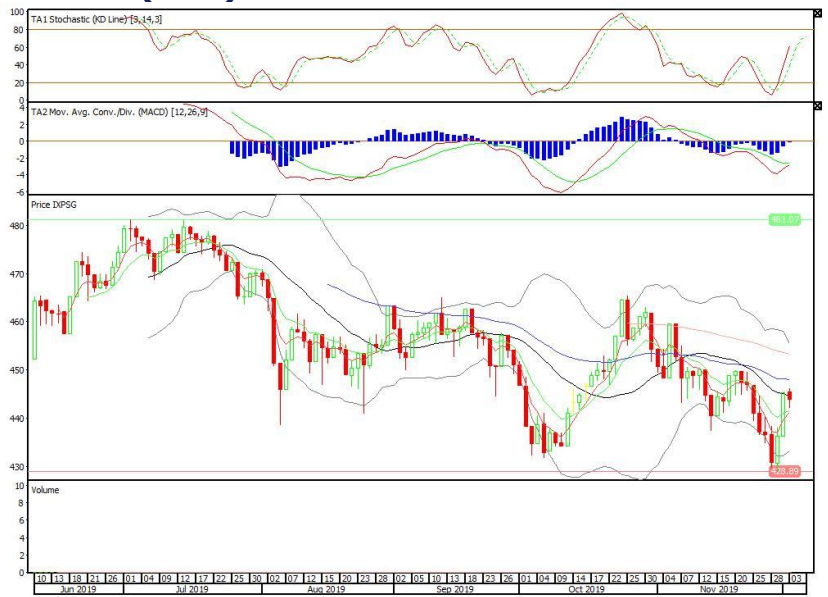


**Pinnacle Indonesia ESG ETF**

**Rekomendasi: SELL**

---Candle ditutup di bawah MA20 dengan membentuk pola long black marubozu yang merupakan sinyal bearish continuation, stochastic netral, MACD histogram convergence negatif. Target pelemahan harga pada level 441 kemudian 439 dengan *resist* di level 446 dan 448.

**XPSG (443)**

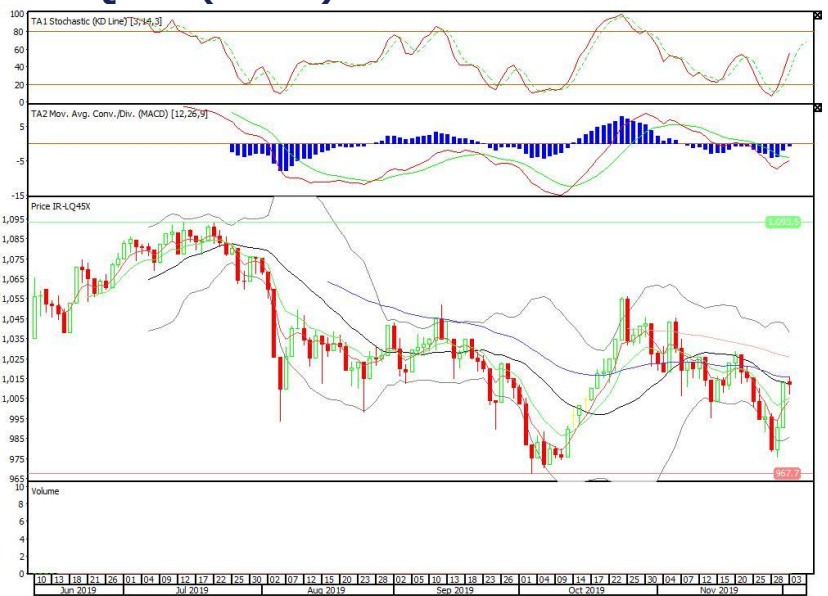


**Premier ETF LQ-45**

**Rekomendasi: SELL**

---Candle ditutup di bawah EMA50 dengan membentuk pola small bearish candle, stochastic netral, MACD histogram convergence negatif. Target pelemahan harga pada level 1.007 kemudian 1.000 dengan *resist* di level 1.019 dan 1.024.

**R-LQ45X (1.012)**

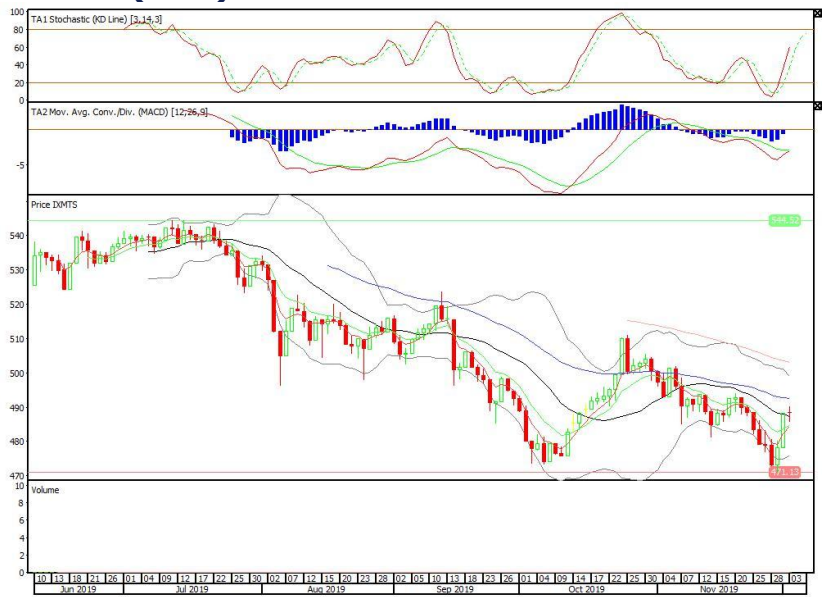


**ETF MNC36 Likuid**

**Rekomendasi: Buy**

---Candle bertahan di atas MA20 dengan membentuk pola doji yang merupakan sinyal indecision, stochastic netral, MACD histogram convergence negatif. Target kenaikan harga pada level 490 kemudian 493 dengan *support* di level 485, *cut loss* di level 482.

**XMTS (488)**



**Head Office****PT INDO PREMIER SEKURITAS**

Pacific Century Place 16/F, SCBD Lot 10  
Jl. Jend. Sudirman Kav.52-53  
Jakarta 12190 - Indonesia  
p +62.21.5088.7200

**ANALYSTS CERTIFICATION.**

The views expressed in this research report accurately reflect the analyst's personal views about any and all of the subject securities or issuers; and no part of the research analyst's compensation was, is, or will be, directly or indirectly, related to the specific recommendations or views expressed in the report.

**DISCLAIMERS**

This research is based on information obtained from sources believed to be reliable, but we do not make any representation or warranty nor accept any responsibility or liability as to its accuracy, completeness or correctness. Opinions expressed are subject to change without notice. This document is prepared for general circulation. Any recommendations contained in this document does not have regard to the specific investment objectives, financial situation and the particular needs of any specific addressee. This document is not and should not be construed as an offer or a solicitation of an offer to purchase or subscribe or sell any securities. PT. Indo Premier Sekuritas or its affiliates may seek or will seek investment banking or other business relationships with the companies in this report.