

# Technical Corner

21 November 2019

**IHSG**

**Range: 6.130 - 6.180**

---Indeks ditutup di atas EMA5 dan membentuk pola long white marubozu yang merupakan sinyal bullish continuation, stochastic netral dan MACD histogram convergence negatif. Target kenaikan indeks pada level 6.180 kemudian 6.205 dengan *support* di level 6.130 dan 6.105.

**IHSG (6.155)**



**Surya Semesta Internusa**

**Rekomendasi: Buy**

---Candle ditutup di atas EMA5 dan membentuk pola white marubozu yang merupakan sinyal bullish continuation, stochastic oversold dan MACD histogram convergence negatif. Target kenaikan harga pada level 720 kemudian 735 dengan *support* di level 690, *cut loss* jika *break* 675.

**SSIA (705)**



**UNTR (22.675)**

**United Tractors**

**Rekomendasi: Buy**

---Candle ditutup di atas EMA5,10 dan membentuk pola white closing marubozu yang merupakan sinyal bullish continuation, stochastic golden cross dan MACD histogram convergence negatif. Target kenaikan harga pada level 23.100 kemudian 23.600 dengan *support* di level 22.225, *cut loss* jika *break* 21.800.



**Bank Negara Indonesia**

**Rekomendasi: Buy**

---Candle ditutup di atas EMA5,10 dengan membentuk pola small bullish candle, stochastic netral, MACD histogram convergence negatif. Target kenaikan harga pada level 7.750 kemudian 7.825 dengan *support* di level 7.600, *cut loss* di level 7.550.

**BBNI (7.650)**

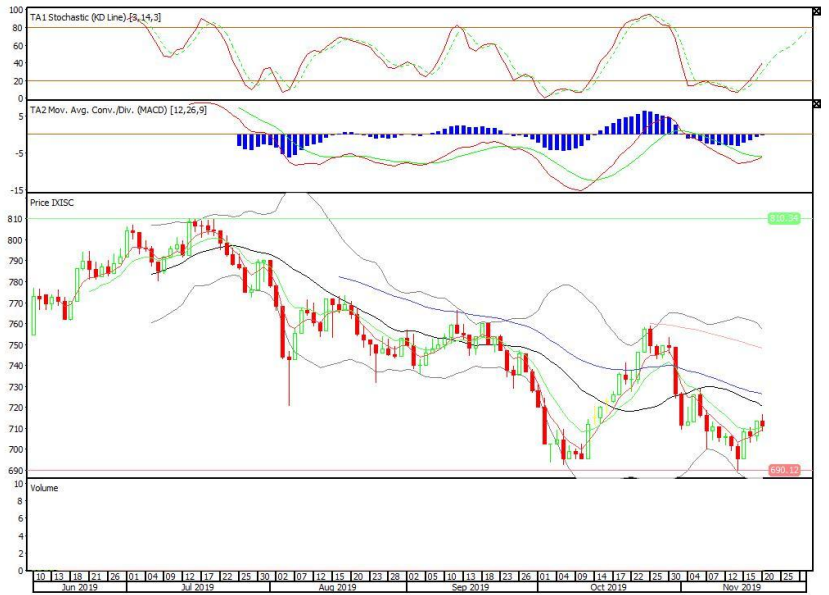


**Premier ETF Indonesia Stated-Owned Companies**

**Rekomendasi: SELL**

---Candle ditutup di bawah EMA50 dengan membentuk pola long black marubozu yang merupakan sinyal bearish continuation, stochastic netral, MACD histogram convergence negatif. Target pelemahan harga pada level 708 kemudian 706 dengan *resist* di level 713 dan 716.

**XISC (711)**

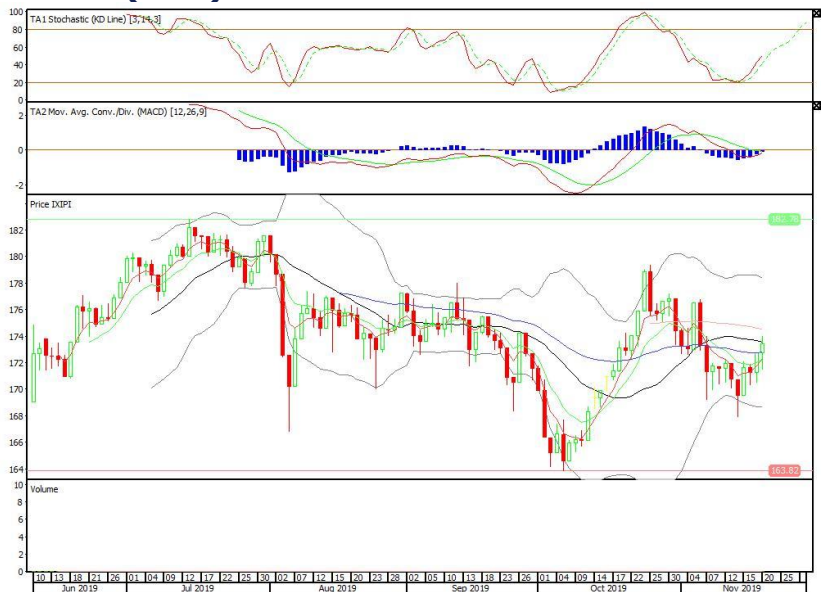


**Premier ETF PEFINDO i-Grade**

**Rekomendasi: Buy**

---Candle ditutup di atas EMA5,10 dengan membentuk pola long white marubozu yang merupakan sinyal bullish continuation, stochastic netral, MACD histogram convergence negatif. Target kenaikan harga pada level 174 kemudian 175 dengan *support* di level 172, *cut loss* di level 171.

**XIPI (173)**

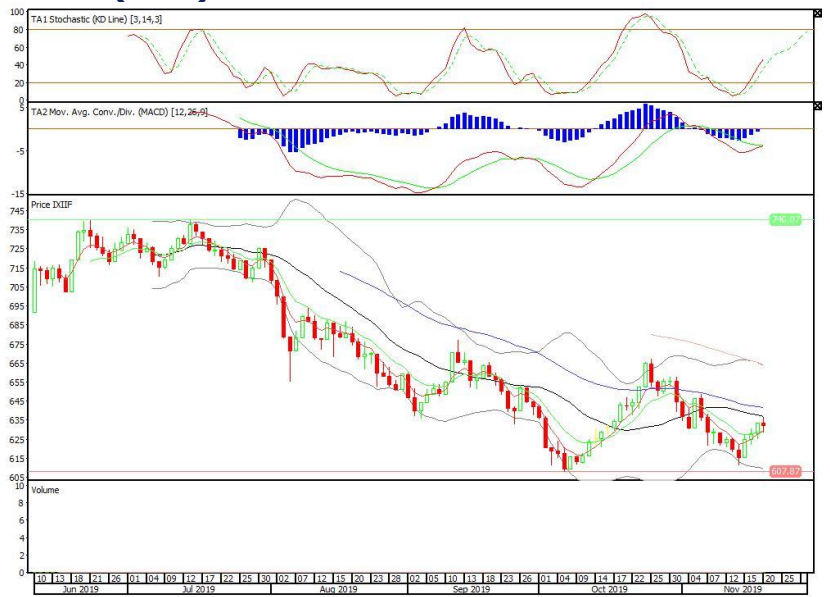


**Premier ETF Indonesia Financial**

**Rekomendasi: SELL**

---Candle ditutup di bawah EMA50 dengan membentuk pola small bearish candle, stochastic netral, MACD histogram convergence negatif. Target pelemahan harga pada level 628 kemudian 625 dengan *resist* di level 636 dan 640.

**XIIF (632)**



**Head Office****PT INDO PREMIER SEKURITAS**

Pacific Century Place 16/F, SCBD Lot 10

Jl. Jend. Sudirman Kav.52-53

Jakarta 12190 - Indonesia

p +62.21.5088.7200

**ANALYSTS CERTIFICATION.**

The views expressed in this research report accurately reflect the analyst's personal views about any and all of the subject securities or issuers; and no part of the research analyst's compensation was, is, or will be, directly or indirectly, related to the specific recommendations or views expressed in the report.

**DISCLAIMERS**

This research is based on information obtained from sources believed to be reliable, but we do not make any representation or warranty nor accept any responsibility or liability as to its accuracy, completeness or correctness. Opinions expressed are subject to change without notice. This document is prepared for general circulation. Any recommendations contained in this document does not have regard to the specific investment objectives, financial situation and the particular needs of any specific addressee. This document is not and should not be construed as an offer or a solicitation of an offer to purchase or subscribe or sell any securities. PT. Indo Premier Sekuritas or its affiliates may seek or will seek investment banking or other business relationships with the companies in this report.