

# Technical Corner

17 September 2019

**IHSG**

**Range: 6.175-6.265**

---Indeks ditutup di bawah MA100 dan membentuk pola long black merubozu yang merupakan sinyal bearish continuation, stochastic netral dan MACD histogram convergence positif. Target pelemahan indeks pada level 6.175 kemudian 6.130 dengan *resist* di level 6.265 dan 6.310.

**IHSG (6.219)**



**Indofood Sukses Makmur**

**Rekomendasi: Buy**

---Candle ditutup di atas EMA5 dan membentuk pola morning star yang merupakan sinyal bullish reversal, stochastic netral dan MACD histogram convergence negatif. Target kenaikan harga pada level 7.900 kemudian 8.050 dengan *support* di level 7.575, *cut loss* jika *break* 7.400.

**INDF (7.750)**



**Telekomunikasi Indonesia**

**Rekomendasi: Buy**

---Candle ditutup di atas EMA5 dan membentuk pola white opening marubozu yang merupakan sinyal bullish continuation, stochastic oversold dan MACD histogram convergence negatif. Target kenaikan harga pada level 4.280 kemudian 4.330 dengan *support* di level 4.160, *cut loss* jika *break* 4.100.

**TLKM (4.220)**

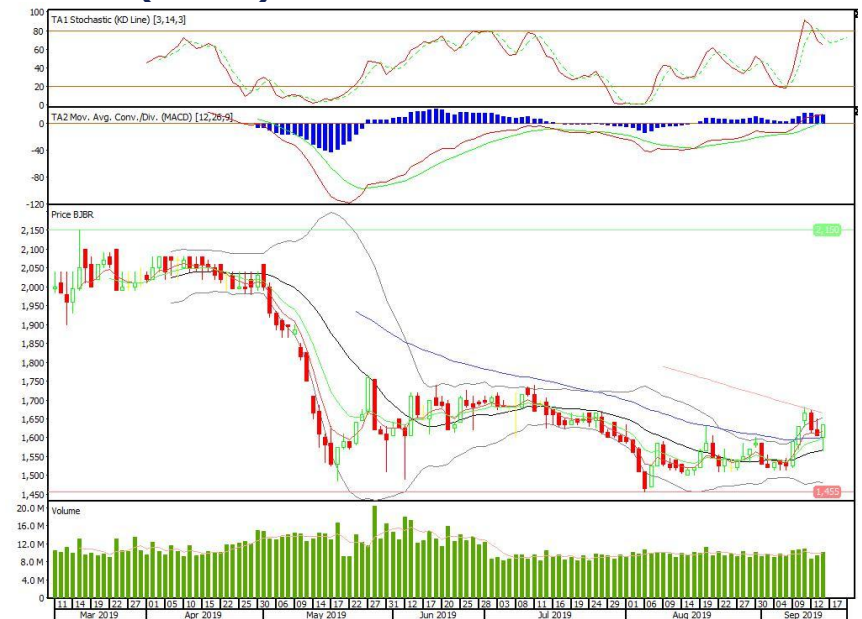


**Bank Pembangunan Daerah Jawa Barat dan Banten**

**Rekomendasi: Buy**

---Candle ditutup di atas EMA5,10 dengan membentuk pola white closing marubozu yang merupakan sinyal bullish continuation, stochastic netral, MACD histogram divergence positif. Target kenaikan harga pada level 1.670 kemudian 1.705 dengan *support* di level 1.600, *cut loss* jika *break* 1.565.

**BJBR (1.635)**

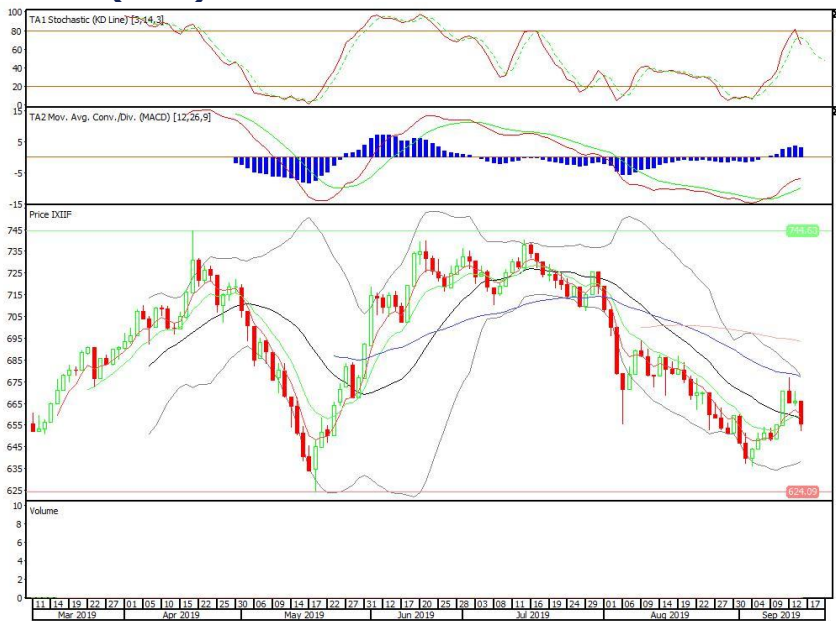


**Premier ETF Indonesia Financial**

**Rekomendasi: SELL**

---Candle ditutup di bawah EMA5,10 dengan membentuk pola black opening marubozu yang merupakan sinyal bearish continuation, stochastic netral, MACD histogram convergence positif. Target pelemahan harga pada level 645 kemudian 635 dengan *resist* di level 666 dan 676.

**XIIF (655)**

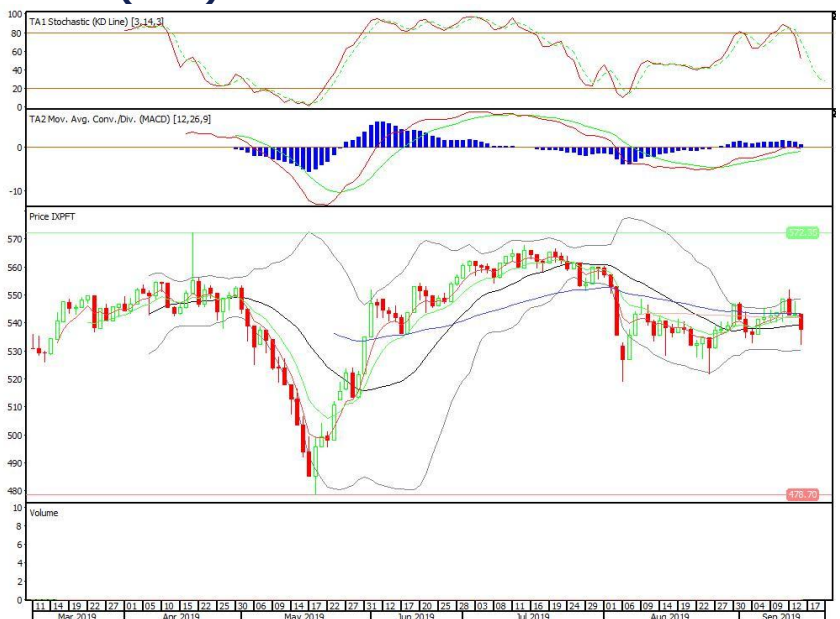


**Pinnacle FTSE Indonesia ETF**

**Rekomendasi: SELL**

---Candle ditutup di bawah EMA5,10 dengan membentuk pola black opening marubozu yang merupakan sinyal bearish continuation, stochastic netral, MACD histogram convergence positif. Target pelemahan harga pada level 532 kemudian 526 dengan *resist* di level 543 dan 548.

**XPFT (537)**

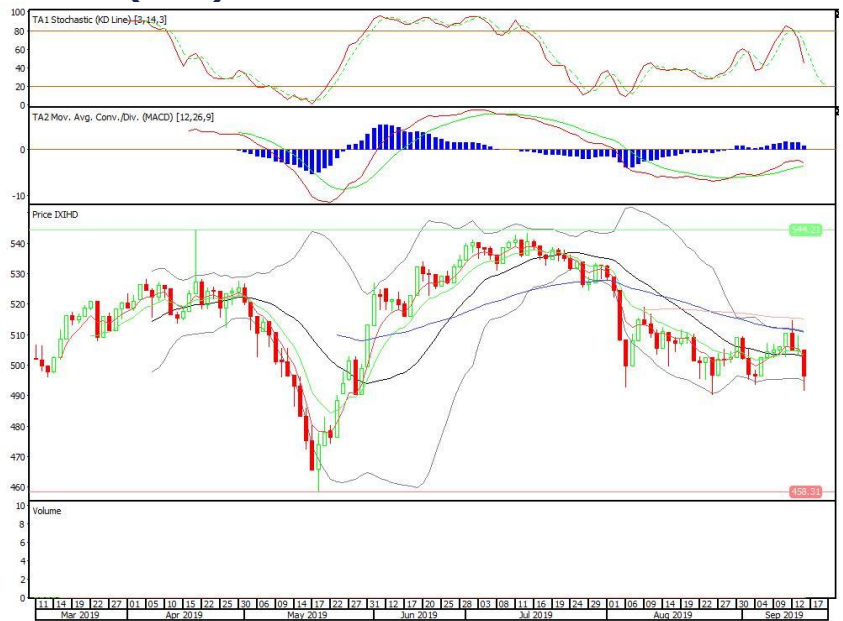


**Premier ETF IDX High Dividend 20**

**Rekomendasi: SELL**

---Candle ditutup di bawah EMA5,10 dengan membentuk pola black opening marubozu yang merupakan sinyal bearish continuation, stochastic netral, MACD histogram convergence positif. Target pelemahan harga pada level 487 kemudian 478 dengan *resist* di level 505 dan 513.

**XIHD (496)**



**Head Office****PT INDO PREMIER SEKURITAS**

Pacific Century Place 16/F, SCBD Lot 10  
Jl. Jend. Sudirman Kav.52-53  
Jakarta 12190 - Indonesia  
p +62.21.5088.7200

**ANALYSTS CERTIFICATION.**

The views expressed in this research report accurately reflect the analyst's personal views about any and all of the subject securities or issuers; and no part of the research analyst's compensation was, is, or will be, directly or indirectly, related to the specific recommendations or views expressed in the report.

**DISCLAIMERS**

This research is based on information obtained from sources believed to be reliable, but we do not make any representation or warranty nor accept any responsibility or liability as to its accuracy, completeness or correctness. Opinions expressed are subject to change without notice. This document is prepared for general circulation. Any recommendations contained in this document does not have regard to the specific investment objectives, financial situation and the particular needs of any specific addressee. This document is not and should not be construed as an offer or a solicitation of an offer to purchase or subscribe or sell any securities. PT. Indo Premier Sekuritas or its affiliates may seek or will seek investment banking or other business relationships with the companies in this report.