

Technical Corner

22 Januari 2018

IHSG

Range: 6.460–6.520

---Indeks bertahan di atas EMA5 dan namun membentuk pola hanging man yang merupakan sinyal bearish reversal, stochastic overbought dan MACD convergence positif. Target koreksi indeks pada level 6.460 kemudian 6.425 dengan resist di 6.520 dan 6.555.

IHSG (6.490)



Kalbe Farma

Rekomendasi: Buy on Weakness

---Candle ditutup di bawah MA20 dan membentuk pola long black marubozu yang merupakan sinyal bearish continuation namun sudah mendekati area support trend linanya, stochastic netral dan MACD divergence negatif. Target harga beli pada level 1.685 dengan resist di 1.725 dan 1.745.

KLBF (1.705)



Mitra Adiperkasa

Rekomendasi: SELL

---Candle ditutup di atas upper band dan membentuk pola hanging man yang merupakan sinyal bearish reversal, stochastic dead cross sedangkan MACD histogram divergence positif. Target pelemahan harga pada level 6.850 kemudian 6.775 dengan *resist* di 7.000 kemudian 7.075.

MAPI (6.925)

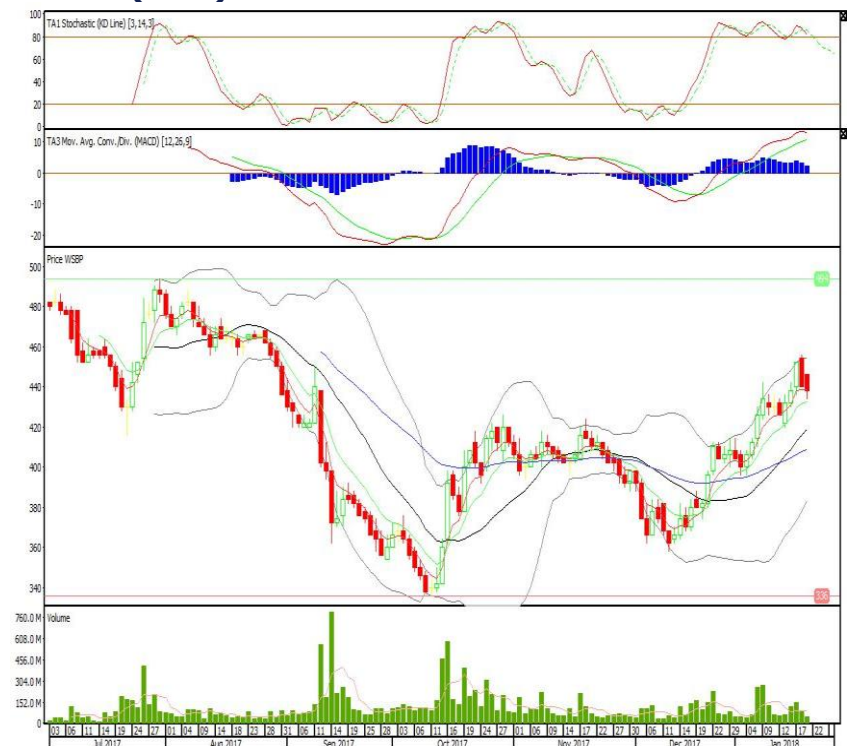


Waskita Beton Precast

Rekomendasi: Buy on Weakness

---Candle ditutup di bawah EMA5 dan membentuk pola black opening marubozu yang merupakan sinyal bearish continuation, stochastic dead cross dan MACD histogram convergence positif. Target harga beli pada level 432 dengan *resist* di 446 kemudian 454.

WSBP (438)



Head Office**PT INDO PREMIER SEKURITAS**

Wisma GKBI 7/F Suite 718

Jl. Jend. Sudirman No.28

Jakarta 10210 - Indonesia

p +62.21.5793.1168

f +62.21.5793.1167

ANALYSTS CERTIFICATION.

The views expressed in this research report accurately reflect the analyst's personal views about any and all of the subject securities or issuers; and no part of the research analyst's compensation was, is, or will be, directly or indirectly, related to the specific recommendations or views expressed in the report.

DISCLAIMERS

This research is based on information obtained from sources believed to be reliable, but we do not make any representation or warranty nor accept any responsibility or liability as to its accuracy, completeness or correctness. Opinions expressed are subject to change without notice. This document is prepared for general circulation. Any recommendations contained in this document does not have regard to the specific investment objectives, financial situation and the particular needs of any specific addressee. This document is not and should not be construed as an offer or a solicitation of an offer to purchase or subscribe or sell any securities. PT. Indo Premier Sekuritas or its affiliates may seek or will seek investment banking or other business relationships with the companies in this report.